



Advanced Card Systems Ltd.
Card & Reader Technologies

ACR3901U-S1

Secure Bluetooth®

Contact Card Reader



Reference Manual V1.07



Revision History

Release Date	Revision Description	Version Number
2015-07-10	<ul style="list-style-type: none">Initial Release	1.00
2015-09-17	<ul style="list-style-type: none">Updated Product Marketing NameUpdated FormattingUpdated Section 5.4.2: Status LEDUpdated Section 6.2: Profile SelectionUpdated Section 6.5.5.5: Sleep Mode OptionUpdated Section 6.5.6: Customer Master Key Reset	1.01
2015-11-05	<ul style="list-style-type: none">Updated Section 5.4.2: Status LEDUpdated Section 6.2: Profile SelectionUpdated Section 6.3: AuthenticationUpdated Section 6.5.6: Customer Master Key ResetUpdated Section 6.5.5.4: Rewrite Master Key CommandUpdated Section 6.6: Mutual Authentication Table	1.02
2016-09-16	<ul style="list-style-type: none">Updated Product PhotoUpdated Product Marketing NameUpdated command examples with incorrect checksum	1.03
2017-01-11	<ul style="list-style-type: none">Updated the Battery LifeAdded Section 6.5.5.7: Set Tx PowerAdded Section 6.5.5.8: Read Tx Power valueAdded Section 6.5.7: Card Set Parameters for Bluetooth mode	1.04
2017-11-02	<ul style="list-style-type: none">Changed Section 6.5.5.1 – Section 6.5.6: (Escape Commands) to new Section 8.1Updated Section 6.3: AuthenticationUpdated Section 6.6: Mutual AuthenticationUpdated Section 6.6.1: SPH_to_RDR_ReqAuthUpdated Section 6.6.3: SPH_to_RDR_AuthRspUpdated Section 6.6.4: RDR_to_SPH_AuthRsp2Updated Section 6.6.5: SPH_to_RDR_DataReqUpdated Section 8.1.9: Customer Master Key Reset Request	1.05



Release Date	Revision Description	Version Number
2017-12-28	<ul style="list-style-type: none">• Updated Section 6.3: Authentication	1.06
	<ul style="list-style-type: none">• Updated Section 6.4.2: Bluetooth Frame Format after Mutual Authentication	
	<ul style="list-style-type: none">• Updated Section 6.6.1: SPH_to_RDR_ReqAuth	
	<ul style="list-style-type: none">• Updated Section 6.6.3: SPH_to_RDR_AuthRsp	
	<ul style="list-style-type: none">• Updated Section 6.6.5: SPH_to_RDR_DataReq	
	<ul style="list-style-type: none">• Updated Section 8.1.4: Rewrite Master Key Command	
	<ul style="list-style-type: none">• Updated Section 8.1.9: Customer Master Key Reset Request	
2018-04-03	<ul style="list-style-type: none">• Updated Section 6.5: Bluetooth Communication Protocol	1.07
	<ul style="list-style-type: none">• Added Section 6.5.5: APDU2 Command (From FW v1.20 and later)	
	<ul style="list-style-type: none">• Updated Section 7.1.4: PC_to_RDR_XfrBlock	
	<ul style="list-style-type: none">• Updated Section 7.2.1: RDR_to_PC_DataBlock	



Table of Contents

1.0.	Introduction	8
1.1.	Reference Documents	8
1.2.	Symbols and Abbreviations	8
2.0.	Features	9
3.0.	Smart Card Support	10
3.1.	MCU Cards	10
3.2.	Memory-based Smart Cards.....	10
4.0.	System Block Diagram.....	11
5.0.	Hardware Design	12
5.1.	Battery.....	12
5.1.1.	Battery charging	12
5.1.2.	Battery life	12
5.2.	Bluetooth Interface.....	12
5.3.	USB Interface	12
5.3.1.	Communication Parameters	12
5.3.2.	Endpoints	13
5.4.	User Interface	13
5.4.1.	Mode Selection Switch.....	13
5.4.2.	Status LED	14
5.5.	Smart Card Interface	14
5.5.1.	Smart Card Power Supply VCC (C1).....	14
5.5.2.	Programming Voltage VPP (C6)	14
5.5.3.	Card Type Selection.....	15
5.5.4.	Interface for Microcontroller-based Cards.....	15
5.5.5.	Card Tearing Protection	15
6.0.	Software Design	16
6.1.	Bluetooth Connection Program Flow	16
6.2.	Profile Selection	17
6.3.	Authentication	19
6.4.	Frame Format	19
6.4.1.	Bluetooth Frame Format	19
6.4.2.	Bluetooth Frame Format after Mutual Authentication	20
6.5.	Bluetooth Communication Protocol	21
6.5.1.	Card Power On	22
6.5.2.	Card Power Off	22
6.5.3.	Get Card Presence	23
6.5.4.	APDU Command.....	24
6.5.5.	APDU2 Command (From FW v1.20 and later)	25
6.5.6.	Escape Command.....	27
6.5.7.	Card Set Parameters	28
6.6.	Mutual Authentication and Encryption Protocol.....	30
6.6.1.	SPH_to_RDR_ReqAuth	30
6.6.2.	RDR_to_SPH_AuthRsp1	31
6.6.3.	SPH_to_RDR_AuthRsp	31
6.6.4.	RDR_to_SPH_AuthRsp2	32
6.6.5.	SPH_to_RDR_DataReq.....	33
6.6.6.	RDR_to_SPH_DataRsp.....	34
7.0.	USB Communication Protocol.....	35
7.1.	CCID Bulk-OUT Messages.....	36
7.1.1.	PC_to_RDR_lccPowerOn.....	36
7.1.2.	PC_to_RDR_lccPowerOff.....	37



7.1.3.	PC_to_RDR_GetSlotStatus	37
7.1.4.	PC_to_RDR_XfrBlock	37
7.1.5.	PC_to_RDR_GetParameters	38
7.1.6.	PC_to_RDR_ResetParameters	39
7.1.7.	PC_to_RDR_SetParameters	39
7.2.	CCID Bulk-IN Messages	41
7.2.1.	RDR_to_PC_DataBlock	41
7.2.2.	RDR_to_PC_SlotStatus	42
7.2.3.	RDR_to_PC_Parameters	43
8.0.	Smart Card Protocol.....	44
8.1.	Peripherals Control	44
8.1.1.	Get Serial Number Command.....	44
8.1.2.	Get Random Number Command	45
8.1.3.	Get Firmware Version Command	46
8.1.4.	Rewrite Master Key Command	47
8.1.5.	Sleep Mode Option	48
8.1.6.	Get Device Address	49
8.1.7.	Set Tx Power.....	50
8.1.8.	Read Tx Power value.....	51
8.1.9.	Customer Master Key Reset Request	51
9.0.	Memory Card Command Set.....	53
9.1.	Memory Card – 1, 2, 4, 8, and 16 kilobit I2C Card	53
9.1.1.	SELECT_CARD_TYPE	53
9.2.	Memory Card – 32, 64, 128, 256, 512, and 1024 kilobit I2C Card	55
9.2.1.	SELECT_CARD_TYPE	55
9.2.2.	SELECT_PAGE_SIZE	55
9.2.3.	READ_MEMORY_CARD	56
9.2.4.	WRITE_MEMORY_CARD	56
9.3.	Memory Card – ATMEL AT88SC153	57
9.3.1.	SELECT_CARD_TYPE	57
9.3.2.	READ_MEMORY_CARD	58
9.3.3.	WRITE_MEMORY_CARD	58
9.3.4.	VERIFY_PASSWORD	59
9.3.5.	INITIALIZE_AUTHENTICATION.....	60
9.3.6.	VERIFY_AUTHENTICATION	60
9.4.	Memory Card – ATMEL AT88C1608.....	61
9.4.1.	SELECT_CARD_TYPE	61
9.4.2.	READ_MEMORY_CARD	61
9.4.3.	WRITE_MEMORY_CARD	62
9.4.4.	VERIFY_PASSWORD	63
9.4.5.	INITIALIZE_AUTHENTICATION.....	63
9.4.6.	VERIFY_AUTHENTICATION	64
9.5.	Memory Card – SLE4418/SLE4428/SLE5518/SLE5528	64
9.5.1.	SELECT_CARD_TYPE	64
9.5.2.	READ_MEMORY_CARD.....	65
9.5.3.	READ_PRESENTATION_ERROR_COUNTER_MEMORY_CARD (SLE4428 and SLE5528) 65	
9.5.4.	READ_PROTECTION_BIT	66
9.5.5.	WRITE_MEMORY_CARD	67
9.5.6.	WRITE_PROTECTION_MEMORY_CARD	67
9.5.7.	PRESENT_CODE_MEMORY_CARD (SLE4428 and SLE5528)	68
9.6.	Memory Card – SLE4432/SLE4442/SLE5532/SLE5542	69
9.6.1.	SELECT_CARD_TYPE	69
9.6.2.	READ_MEMORY_CARD	69
9.6.3.	READ_PRESENTATION_ERROR_COUNTER_MEMORY_CARD (SLE 4442 and SLE 5542) 70	
9.6.4.	READ_PROTECTION_BITS	70
9.6.5.	WRITE_MEMORY_CARD	71



9.6.6.	WRITE_PROTECTION_MEMORY_CARD	71
9.6.7.	PRESENT_CODE_MEMORY_CARD (SLE 4442 and SLE 5542)	72
9.6.8.	CHANGE_CODE_MEMORY_CARD (SLE 4442 and SLE 5542)	73
9.7.	Memory Card – SLE 4406/SLE 4436/SLE 5536/SLE 6636	73
9.7.1.	SELECT_CARD_TYPE	73
9.7.2.	READ_MEMORY_CARD	74
9.7.3.	WRITE_ONE_BYTE_MEMORY_CARD	74
9.7.4.	PRESENT_CODE_MEMORY_CARD	75
9.7.5.	AUTHENTICATE_MEMORY_CARD (SLE 4436, SLE 5536 and SLE 6636)	76
9.8.	Memory Card – SLE 4404	77
9.8.1.	SELECT_CARD_TYPE	77
9.8.2.	READ_MEMORY_CARD	78
9.8.3.	WRITE_MEMORY_CARD	78
9.8.4.	ERASE_SCRATCH_PAD_MEMORY_CARD	79
9.8.5.	VERIFY_USER_CODE	79
9.8.6.	VERIFY_MEMORY_CODE	80
9.9.	Memory Card – AT88SC101/AT88SC102/AT88SC1003	81
9.9.1.	SELECT_CARD_TYPE	81
9.9.2.	READ_MEMORY_CARD	81
9.9.3.	WRITE_MEMORY_CARD	82
9.9.4.	ERASE_NON_APPLICATION_ZONE	82
9.9.5.	ERASE_APPLICATION_ZONE_WITH_ERASE	83
9.9.6.	ERASE_APPLICATION_ZONE_WITH_WRITE_AND_ERASE	84
9.9.7.	VERIFY_SECURITY_CODE	85
9.9.8.	BLOWN_FUSE	86
10.0.	Other Commands Access via PC_to_RDR_XfrBlock	88
10.1.	GET_READER_INFORMATION	88
Appendix A.	Supported Card Types	89
Appendix B.	Error Codes	90

List of Figures

Figure 1 :	ACR3901U-S1 Architecture	11
Figure 2 :	Bluetooth Connection Flow	16
Figure 3 :	nRFgo Studio GATT Setting Interface	17
Figure 4 :	Authentication Procedure	19

List of Tables

Table 1 :	Symbols and Abbreviations	8
Table 2 :	Estimated Battery Lifespan	12
Table 3 :	USB Interface Wiring	12
Table 4 :	Mode Selection Switch	13
Table 5 :	Status LED	14
Table 6 :	ACR3901U-S1 Service Handles and UUID Information List	18
Table 7 :	Bluetooth Frame Format	19
Table 8 :	Encrypted Frame Format after Mutual Authentication	20
Table 9 :	Command Code Summary	21
Table 10 :	Response Code Summary	21
Table 11 :	Summary of Mutual Authentication Commands	30
Table 12 :	Supported Card Types	89



Table 13 : Error Code 90



1.0. Introduction

ACR3901U-S1 Secure Bluetooth® Contact Card Reader acts as an interface for the communication between a computer/mobile device and a smart card. Different types of smart cards have different commands and different communication protocols which, in most cases, prevent direct communication between a smart card and a computer/mobile device. ACR3901U-S1 Secure Bluetooth Contact Card Reader establishes a uniform interface from the computer/mobile device to the smart card for a wide variety of cards. By taking care of the card's particulars, it releases the computer software programmer from being responsible with smart card operations' technical details, which in many cases, are not relevant to the implementation of a smart card system.

1.1. Reference Documents

The following related documents are available from www.usb.org

- Universal Serial Bus Specification 2.0 (also referred to as the USB specification), April 27, 2000
- Universal Serial Bus Common Class Specification 1.0, December 16, 1997
- Universal Serial Bus Device Class: Smart Card CCID Specification for Integrated Circuit(s) Cards Interface Devices, Revision 1.1, April 22, 2005

The following related documents can be ordered through www.ansi.org

- ISO/IEC 7816-1; Identification Cards – Integrated circuit(s) cards with contacts - Part 1: Physical Characteristics
- ISO/IEC 7816-2; Identification Cards – Integrated circuit(s) cards with contacts - Part 2: Dimensions and Locations of the contacts
- ISO/IEC 7816-3; Identification Cards – Integrated circuit(s) cards with contacts - Part 3: Electronic signals and transmission protocols

1.2. Symbols and Abbreviations

Abbreviation	Description
ATR	Answer-To-Reset
CCID	Chip/Smart Card Interface Device
ICC	Integrated Circuit Cards
IFSC	Information Field Sized for ICC for protocol T=1
IFSD	Information Field Sized for CCID for protocol T=1
NAD	Node Address
PPS	Protocol and Parameters Selection
RFU	Reserved for future use ¹
TPDU	Transport Protocol Data Unit
USB	Universal Serial Bus

Table 1: Symbols and Abbreviations

¹ Must be set to zero unless stated differently.



2.0. Features

- USB Full Speed Interface
- Bluetooth Interface
- Plug and Play – CCID support brings utmost mobility
- Smart Card Reader:
 - Contact Interface:
 - Supports ISO 7816 Class A, B, and C (5 V, 3 V, 1.8 V) cards
 - Supports microprocessor cards with T=0 or T=1 protocol
 - Supports memory cards
 - Supports PPS (Protocol and Parameters Selection)
 - Features Short Circuit Protection
 - Supports AES-128 encryption algorithm
- Application Programming Interface:
 - Supports PC/SC
 - Supports CT-API (through wrapper on top of PC/SC)
- Built-in Peripherals:
 - LEDs
- USB Firmware Upgradeability¹
- Supports Android™ 4.3 and later²
- Supports iOS 5.0 and later³
- Compliant with the following standards:
 - EN 60950/IEC 60950
 - ISO 7816
 - Bluetooth®
 - EMV™ Level 1 (Contact)
 - PC/SC
 - CCID
 - CE
 - FCC
 - RoHS 2
 - REACH
 - VCCI (Japan)
 - MIC (Japan)
 - Microsoft® WHQL

¹ Applicable under PC-linked mode

² Uses an ACS-defined Android Library

³ Uses an ACS-defined iOS Library



3.0. Smart Card Support

3.1. MCU Cards

ACR3901U-S1 is a PC/SC-compliant smart card reader that supports ISO 7816 Class A, B, and C (5 V, 3 V, and 1.8 V) smart cards. It also works with MCU cards following either the T=0 and T=1 protocol.

The card ATR indicates the specific operation mode (TA2 present; bit 5 of TA2 must be 0) and when that particular mode is not supported by the ACR3901U-S1, it will reset the card to negotiable mode. If the card cannot be set to negotiable mode, the reader will then reject the card.

When the card ATR indicates the negotiable mode (TA2 not present) and communication parameters other than the default parameters, the ACR3901U-S1 will execute the PPS and try to use the communication parameters that the card suggested in its ATR. If the card does not accept the PPS, the reader will use the default parameters (F=372, D=1).

For the meaning of the aforementioned parameters, please refer to ISO 7816-3.

3.2. Memory-based Smart Cards

ACR3901U-S1 works with several memory-based smart cards such as:

- Cards following the I2C bus protocol (free memory cards) with maximum 128 bytes page with capability, including:
 - Atmel®: AT24C01/02/04/08/16/32/64/128/256/512/1024
 - SGS-Thomson: ST14C02C, ST14C04C
 - Gemplus: GFM1K, GFM2K, GFM4K, GFM8K
- Cards with secure memory IC with password and authentication, including:
 - Atmel®: AT88SC153 and AT88SC1608
- Cards with intelligent 1 KB EEPROM with write-protect function, including:
 - Infineon®: SLE4418, SLE4428, SLE5518 and SLE5528
- Cards with intelligent 256 bytes EEPROM with write-protect function, including:
 - Infineon®: SLE4432, SLE4442, SLE5532 and SLE5542
- Cards with '104' type EEPROM non-reloadable token counter cards, including:
 - Infineon®: SLE4406, SLE4436, SLE5536 and SLE6636
- Cards with Intelligent 416-bit EEPROM with internal PIN check, including:
 - Infineon®: SLE4404
- Cards with Security Logic with Application Zone(s), including:
 - Atmel®: AT88SC101, AT88SC102 and AT88SC1003

4.0. System Block Diagram

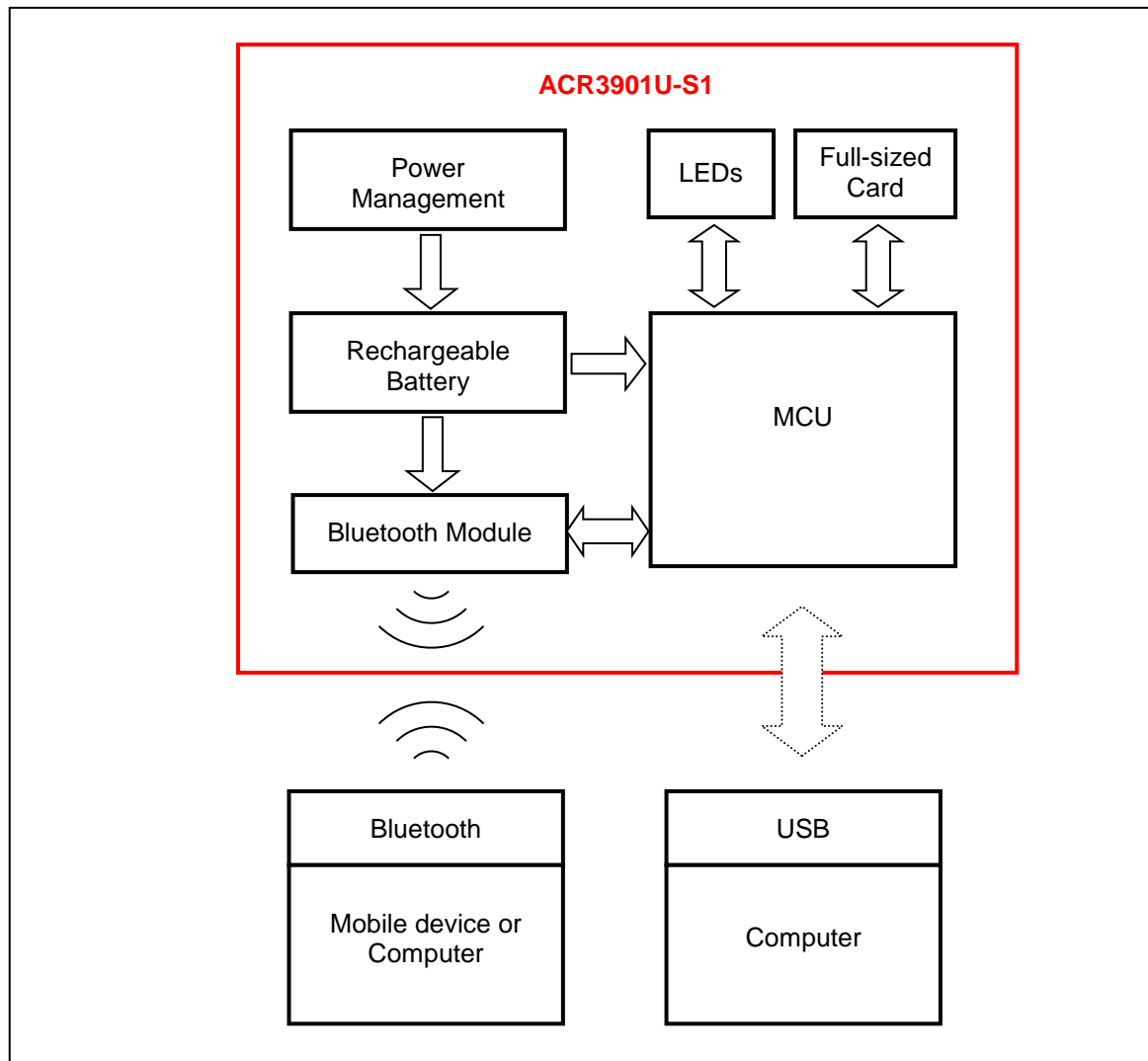


Figure 1: ACR3901U-S1 Architecture

5.0. Hardware Design

5.1. Battery

ACR3901U-S1 is using a rechargeable Lithium-ion battery which has a capacity of 320 mAh.

5.1.1. Battery charging

Once the battery of ACR3901U-S1 runs out, it may be charged in any of the following modes: OFF, USB, Bluetooth; as long as it is connected to a power outlet.

5.1.2. Battery life

The battery life is dependent on the usage of the device. Below is an estimate of the battery life depending on the various work conditions:

Mode	Estimated Battery Life
Working Mode	24 days* ⁽¹⁾
Standby Mode	28 days ⁽²⁾
OFF Mode	2 years

Table 2: Estimated Battery Lifespan

***Note:** Results may vary as it depends on the smart card used.

⁽¹⁾ In Bluetooth mode, run 10 operations per day with 1 minute operation run.

⁽²⁾ In Bluetooth mode, set sleep time as 60 seconds and wake up once per day.

5.2. Bluetooth Interface

ACR3901U-S1 uses Bluetooth Low Energy (LE) 4.0 as the medium to pair the device with computers/mobile devices.

5.3. USB Interface

The micro-USB port is used to connect the ACR3901U-S1 to the computer as battery charging port. This port is also used in order for the ACR3901U-S1 to operate in PC-linked mode.

5.3.1. Communication Parameters

ACR3901U-S1 is connected to a computer through USB as specified in the USB Specification 2.0. ACR3901U-S1 is working in full speed mode, i.e. 12 Mbps.

Pin	Signal	Function
1	V _{BUS}	+5 V power supply for the reader
2	D-	Differential signal transmits data between ACR3901U-S1 and computer
3	D+	Differential signal transmits data between ACR3901U-S1 and computer
4	GND	Reference voltage level for power supply

Table 3: USB Interface Wiring

5.3.2. Endpoints

ACR3901U-S1 uses the following endpoints to communicate with the host computer:

Control Endpoint	For setup and control purpose
Bulk OUT	For command to be sent from host to ACR3901U-S1 (data packet size is 64 bytes)
Bulk IN	For response to be sent from ACR3901U-S1 to host (data packet size is 64 bytes)
Interrupt IN	For card status message to be sent from ACR3901U-S1 to host (data packet size is 8 bytes)

5.4. User Interface

5.4.1. Mode Selection Switch

ACR3901U-S1 has three modes: USB, Off, and Bluetooth. User can select one mode at a time as a data transmission interface.

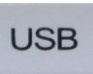

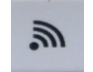
Symbol	Switch	Active Mode
	USB	PC-linked
	Off	No power
	Bluetooth	Bluetooth

Table 4: Mode Selection Switch

5.4.2. Status LED

ACR3901U-S1 has three LEDs to show the various operation status, where:

- **Red LED** - Battery status
- **Blue LED** - Card and reader status under Bluetooth mode
- **Green LED** - Card and reader status under USB mode

Color	LED Activity	Status
Red	On	The battery is charging (will turn OFF after battery is fully charged)
	Slow flash (1 second/flash)	The battery needs to be charged
Blue	Fast–Slow flash (Fast: 250 ms/flash; Slow: 500 ms/flash)	Ready for Bluetooth device pairing
	Slow flash (2 seconds/flash)	Bluetooth device connected and no card operation
	Fast flash	Data transferring between the reader and mobile device
	On	Card is connected and powered on
Green	Slow flash (2 seconds/flash)	No card operation and the reader is waiting for PC instructions
	Fast flash	Data transferring between the reader and PC
	On	Card is connected and powered on

Table 5: Status LED

Note: When red, blue and green LEDs are OFF, the reader is powered off. Both blue and green LEDs will light for 1 second, and then will turn off when the reader received some critical error codes from the Bluetooth module.

5.5. Smart Card Interface

The interface between the ACR3901U-S1 and the inserted smart card follows the specification of ISO 7816-3 with certain restrictions or enhancements to increase the practical functionality of ACR3901U-S1.

5.5.1. Smart Card Power Supply VCC (C1)

The current consumption of the inserted card must not be higher than 50 mA.

5.5.2. Programming Voltage VPP (C6)

According to ISO 7816-3, the smart card contact C6 (VPP) supplies the programming voltage to the smart card. Since all common smart cards in the market are EEPROM-based and do not require the provision of an external programming voltage, the contact C6 (VPP) has been implemented as a normal control signal in the ACR3901U-S1. The electrical specifications of this contact are identical to those of the signal RST (at contact C2).



5.5.3. Card Type Selection

The controlling computer must always select the card type through the proper command sent to the ACR3901U-S1 prior to activating the inserted card. This includes both the memory cards and MCU-based cards.

For MCU-based cards, the reader allows to select the preferred protocol, T=0 or T=1. However, this selection is only accepted and carried out by the reader through the PPS when the card inserted in the reader supports both protocol types. Whenever an MCU-based card supports only one protocol type, T=0 or T=1, the reader automatically uses that protocol type, regardless of the protocol type selected by the application.

5.5.4. Interface for Microcontroller-based Cards

For microcontroller-based smart cards, only the contacts C1 (VCC), C2 (RST), C3 (CLK), C5 (GND) and C7 (I/O) are used. A frequency of 4.8 MHz is applied to the CLK signal (C3).

5.5.5. Card Tearing Protection

The ACR3901U-S1 provides a mechanism to protect the inserted card when it is suddenly withdrawn while it is powered up. The power supply to the card and the signal lines between the ACR3901U-S1 and the card is immediately deactivated when the card is being removed. However, as a rule to avoid any electrical damage, a card should only be removed from the reader while it is powered down.

Note: *ACR3901U-S1 never switches on the power supply to the inserted card by itself. The controlling computer through the proper command sent to the reader must explicitly do this.*

6.0. Software Design

6.1. Bluetooth Connection Program Flow

The program flow of a Bluetooth connection is shown below:

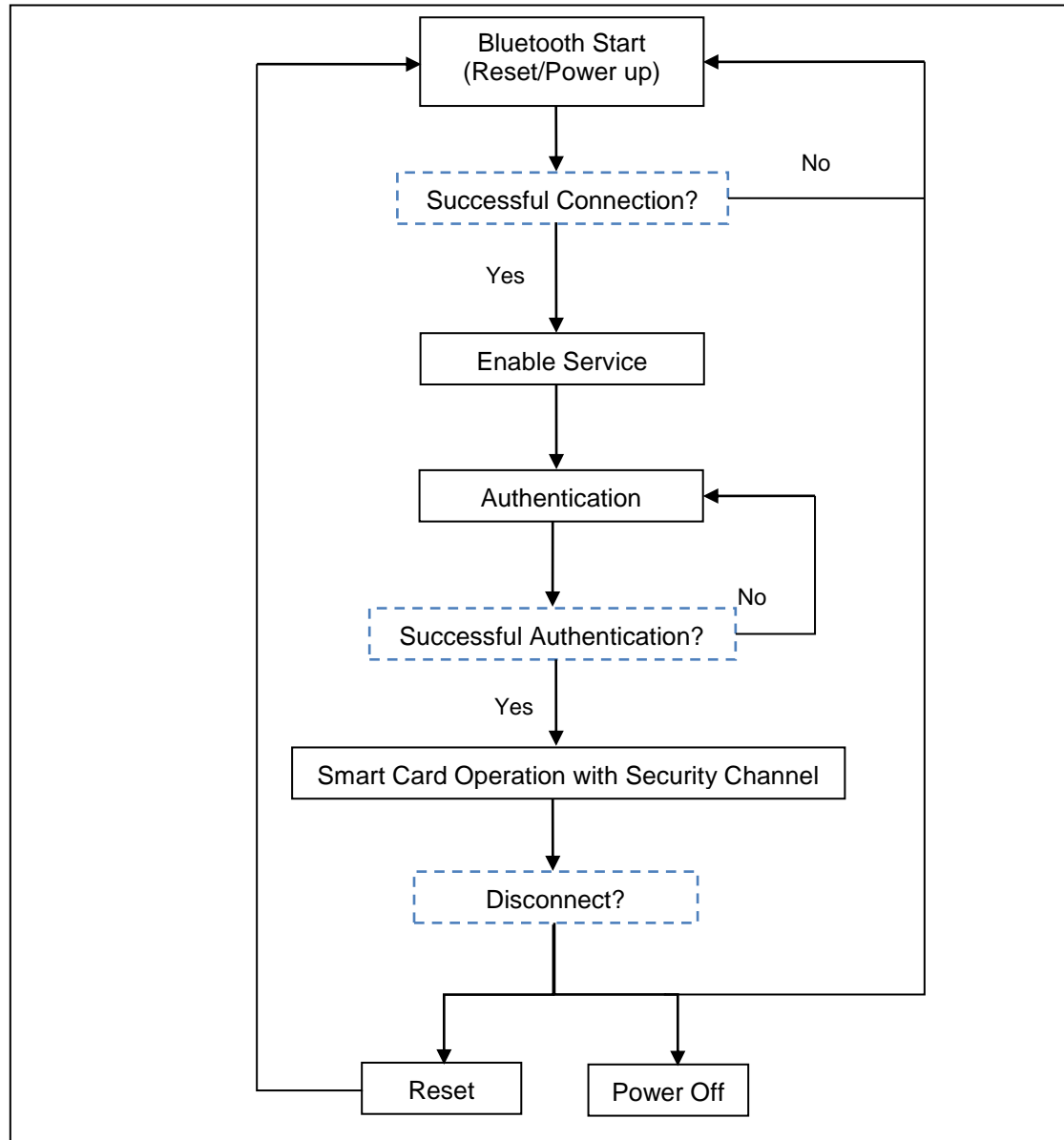


Figure 2: Bluetooth Connection Flow

6.2. Profile Selection

ACR3901U-S1 is a smart card reader that is designed to use Bluetooth technology as an interface to transmit data. A customized service called Commands Communication with three pipes is used: one pipe is used for command request, second pipe is for command response, and the third pipe is used to notify the paired device about the card and sleep mode status.

Also, the current reader's battery status is significant when the reader is operating in Bluetooth mode, hence, a customized battery service is used to notify the paired device about the current battery status. When there is a change in the battery status, the reader will notify the paired device through a specific pipe. To simplify, the battery levels are divided into three groups, below is a table summarizing the battery level and its corresponding return value:

Status	Voltage	Return Value
Sufficient battery	≥ 3.3 V	FEh
Low battery	<3.3 V and ≥ 2.9 V	Value other than FFh/FEh/00h
No battery	<2.9 V	00h
USB mode		FFh

In Card Status Notification service, it will notify the paired device on any changes on the card status or when the reader enters sleep mode. Below is a list of the status and the corresponding return value:

Status	Return Value
No card present	50 02h
Card present	50 03h
Reader has entered sleep mode	50 04h

Finally, to provide more reader information to the user, a customized Device Information service was added. This can only be read manually, or by an application request. The characteristics include **Manufacturer Name**, **Firmware Revision**, **Model Number**, and **Serial Number**.

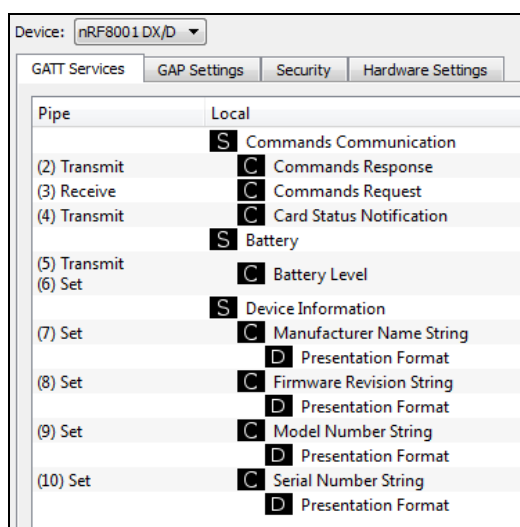


Figure 3: nRFGo Studio GATT Setting Interface



nRFgo-Studio Configuration adds one service, and there will be totally 10 services:

```
#define PIPE_GAP_DEVICE_NAME_SET 1
#define PIPE_COMMANDS_COMMUNICATION_COMMANDS_RESPONSE_TX 2
#define PIPE_COMMANDS_COMMUNICATION_COMMANDS_REQUEST_RX 3
#define PIPE_COMMANDS_COMMUNICATION_CARD_STATUS_NOTIFICATION_TX 4
#define PIPE_BATTERY_BATTERY_LEVEL_TX 5
#define PIPE_BATTERY_BATTERY_LEVEL_SET 6
#define PIPE_DEVICE_INFORMATION_MANUFACTURER_NAME_STRING_SET 7
#define PIPE_DEVICE_INFORMATION_FIRMWARE_REVISION_STRING_SET 8
#define PIPE_DEVICE_INFORMATION_MODEL_NUMBER_STRING_SET 9
#define PIPE_DEVICE_INFORMATION_SERIAL_NUMBER_STRING_SET 10
#define NUMBER_OF_PIPES 10
```

#define PIPE_GAP_DEVICE_NAME_SET is used to change the device name at runtime by the application controller. So that in Bluetooth mode, the advertising name will be in the format of “ACR3901U-S1XXXXXXX”, where “XXXXXXX” is the last 7 bytes of reader’s serial number.

In order to make the advertising name be “ACR3901U-S1XXXXXXX”, Bluetooth Mode Start operation should be implemented first.

Bluetooth Mode Start:

1. Setup (06h) uploads the configuration to Bluetooth module.
2. Use pipe 1 to set the device name in the format of “ACR3901U-S1XXXXXXX” (PIPE_GAP_DEVICE_NAME_SET).
3. Connect (0Fh).
4. Advertising.

Attribute Name	UUID	Handle
DeviceName	2A00	03h
Send (Reader → Paired device)	8002	0Bh
Receive (Paired device → Reader)	8003	0Eh
CardStatus	8004	10h
BatteryLevel	2A19	14h
Manufacturer	2A29	18h
FW_Version	2A26	1Bh
ModelNumber	2A24	1Eh
SerialNumber	2A25	21h

Table 6: ACR3901U-S1 Service Handles and UUID Information List

6.3. Authentication

Before any sensitive data can be loaded into ACR3901U-S1, the data processing server must be authenticated by ACR3901U-S1 for the privilege to modify the secured data inside reader. In ACR3901U-S1, a mutual authentication method is being used.

For better pictorial illustration, please refer to figure below (The picture below has omitted the bridging device for simplicity and better illustration):

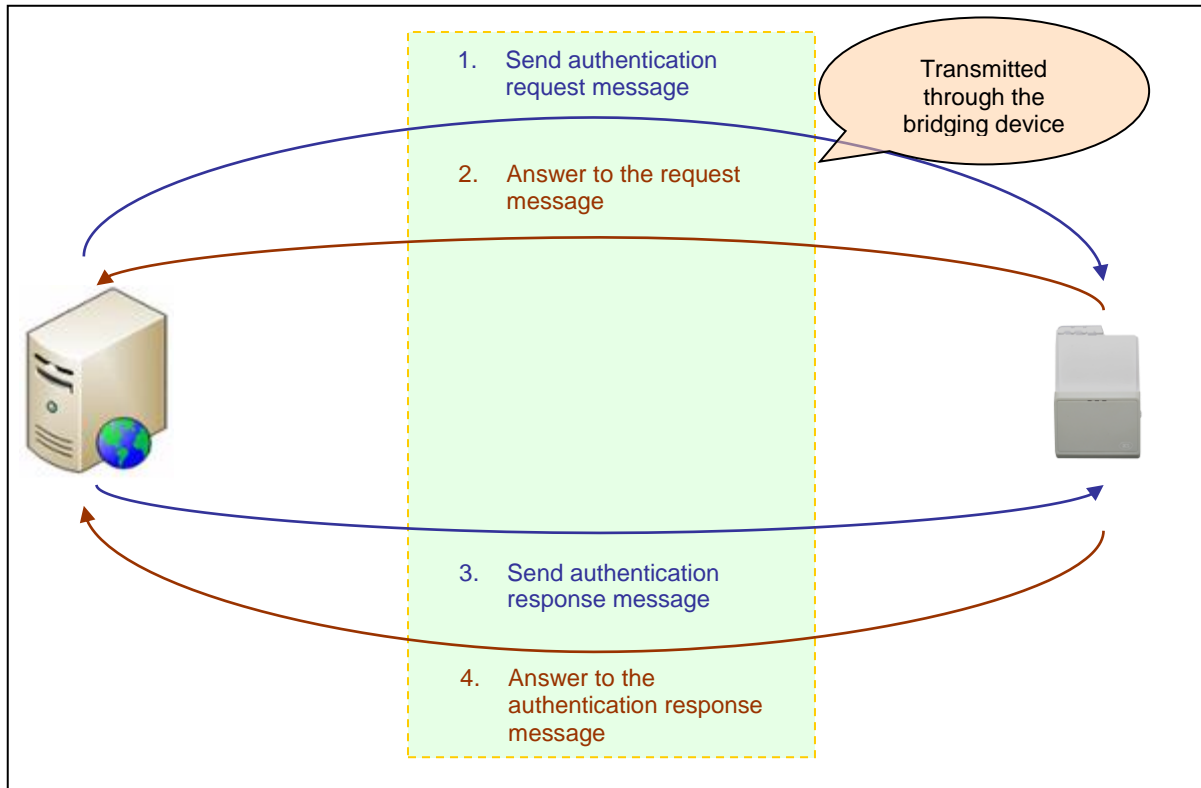


Figure 4: Authentication Procedure

After successful authentication, a 16-byte Session Key is generated in both ACR3901U-S1 and the data server.

Note: For more detailed information, you may contact an ACS sales representative.

6.4. Frame Format

6.4.1. Bluetooth Frame Format

HID Frame	Length (Bytes)	Description
Identifiers	1	Commands
Length	2	Length {Payload+Checksum}
Payload	0-N	Data
Checksum	1	XOR {Identifiers,Length,Payload}

Table 7: Bluetooth Frame Format



The frame format should be:

Identifier + LEN1 + LEN2 + N-bytes Payload + Checksum

If the total command length, including identifier, length, and payload, is greater than 20 bytes, then the reader or the paired device will automatically divide it into several frames.

Data checksum is used in detecting errors that may have been introduced during wireless data transmission. To calculate the data checksum: XOR {Identifiers,Length,Payload}.

Example: 62010063 => Checksum = 63h

6.4.2. Bluetooth Frame Format after Mutual Authentication

Mutual authentication was introduced to avoid man-in-the-middle attack through the Bluetooth communication channel. After a successful mutual authentication, the Bluetooth Frame Format in **Table 7** will be encrypted and packed with 1 byte header byte, 2 Len byte, and 1 check byte. The frame format after mutual authentication should look like the structure below:

Header + Len + (Identifiers + Length + Payload + Checksum)* + Check byte

Note: Each 16 bytes of data will be encrypted with the Session Key using the AES-128 CBC cipher mode. The initial vector is 16 bytes (00h) in AES-128 CBC cipher mode.

HID Frame	Length (bytes)	Description	
Header byte	1	Value: 72h / 22h	
Len	2	Length {Identifiers + Length + Payload + Checksum + Check + Stop byte}	
Identifiers	1	Commands	Encrypted data of the Bluetooth frame format;
Length	2	Length {Payload + Checksum}	
Payload	0-N	Data	The final data length of this part is 16*N bytes (N>0)
Checksum	1	XOR {Identifiers, Length, Payload}	
Check byte	1	XOR {Header, Len, Encrypted(Identifiers, Length, Payload, Checksum)}	

Table 8: Encrypted Frame Format after Mutual Authentication

6.5. Bluetooth Communication Protocol

ACR3901U-S1 communicates to the paired device using the Bluetooth interface with a predefined protocol. The protocol is similar to the formats of the CCID Command Pipe and Response Pipe.

Command	Mode supported	Sender	Description
62h	Authenticated	Paired device	ICC Power On
63h	Authenticated	Paired device	ICC Power Off
65h	Authenticated	Paired device	Get Card Presence
6Fh	Authenticated	Paired device	Exchange APDU
67h	Authenticated	Paired device	Exchange APDU2
61h	Authenticated	Paired device	Set Parameters
6Bh	Authenticated	Paired device	Peripheral Commands
70h	Connected/Authenticated	Paired device	SPH_to_RDR_ReqAuth*
71h	Connected/Authenticated	Paired device	SPH_to_RDR_AuthRsp*

Table 9: Command Code Summary

Command	Mode Supported	Sender	Description
12h	Authenticated	Reader	Response to ICC Power On
13h	Authenticated	Reader	Response to ICC Power Off
14h	Authenticated	Reader	Response to Get Card Presence
11h	Authenticated	Reader	Response to Exchange APDU
17h	Authenticated	Reader	Response to Exchange APDU2
16h	Authenticated	Reader	Response to Set Parameters
15h	Authenticated	Reader	Response to Peripheral Commands
20h	Connected/Authenticated	Reader	SPH_to_RDR_AuthRsp1*
21h	Connected/Authenticated	Reader	SPH_to_RDR_AuthRsp2*

Table 10: Response Code Summary

***Note:** These command/response codes are the communication codes being used in Mutual Authentication.

6.5.1. Card Power On

This command sends a power on request to the reader.

Command Format

Offset	Field	Size	Value	Description
0	<i>bMessageType</i>	1	62h	-
1	<i>LEN1 LEN2 (wLength)</i>	2	0100h	Number of extra bytes starting from the next field for this message, and is expressed in two bytes, and LEN1 is LSB while LEN2 is MSB
3	<i>CSUM (wChecksum)</i>	1	63h	CSUM means the XOR values of all bytes in the command

Response Data Format

Offset	Field	Size	Value	Description
0	<i>bMessageType</i>	1	12h	-
1	<i>LEN1 LEN2 (wLength)</i>	2	0100h	Number of extra bytes starting from the next field for this message, and is expressed in two bytes long, and LEN1 is LSB while LEN2 is MS
3	<i>N byte ATR</i>	N		Card Answer-To-Reset
3+N	<i>CSUM (wChecksum)</i>	1		CSUM means the XOR values of all bytes in the command

Example:

Request = 62 01 00 63

Response = 12 14 00 3B BE 11 00 00 41 01 38 00 00 00 00 12 34 56 78 01
90 00 73

ATR = 3B BE 11 00 00 41 01 38 00 00 00 00 12 34 56 78 01

6.5.2. Card Power Off

This command sends a power off request to the reader.

Command Format

Offset	Field	Size	Value	Description
0	<i>bMessageType</i>	1	63h	-
1	<i>LEN1 LEN2 (wLength)</i>	2	0100h	Number of extra bytes starting from the next field for this message, and is expressed in two bytes long, and LEN1 is LSB while LEN2 is MSB
3	<i>CSUM (wChecksum)</i>	1	62h	CSUM means the XOR values of all bytes in the command



Response Data Format

Offset	Field	Size	Value	Description
0	<i>bMessageType</i>	1	13h	-
1	<i>LEN1 LEN2 (wLength)</i>	2	0100h	Number of extra bytes starting from the next field for this message, and is expressed in two bytes long, and LEN1 is LSB while LEN2 is MSB
3	<i>CSUM (wChecksum)</i>	1	12h	CSUM means the XOR values of all bytes in the command

Example:

Request = 62 01 00 62

Response = 13 01 00 12

6.5.3. Get Card Presence

This checks the presence of the inserted card.

Command Format

Offset	Field	Size	Value	Description
0	<i>bMessageType</i>	1	65h	-
1	<i>LEN1 LEN2 (wLength)</i>	2	0100h	Number of extra bytes starting from the next field for this message, and is expressed in two bytes long, and LEN1 is LSB while LEN2 is MSB
3	<i>CSUM (wChecksum)</i>	1	64h	CSUM means the XOR values of all bytes in the command

Response Data Format

Offset	Field	Size	Value	Description
0	<i>bMessageType</i>	1	14h	-
1	<i>LEN1 LEN2 (wLength)</i>	2	0200h	Number of extra bytes starting from the next field for this message, and is expressed in two bytes long, and LEN1 is LSB while LEN2 is MSB
3	<i>STA</i>	1	-	Card Status: 00 = Unknown status 01 = No card present 02 = Card present but inactive 03 = Card present and active
4	<i>CSUM (wChecksum)</i>	1	-	CSUM means the XOR values of all bytes in the command



Example:

Request = 65 01 00 64

Response = 14 02 00 03 15

6.5.4. APDU Command

This command sends an APDU command to the reader.

Command Format

Offset	Field	Size	Value	Description
0	<i>bMessageType</i>	1	6Fh	-
1	<i>LEN1 LEN2 (wLength)</i>	2	-	Number of extra bytes starting from the next field for this message, and is expressed in two bytes long, and LEN1 is LSB while LEN2 is MSB
3	<i>APDU CMD</i>	N	-	APDU Command
3+N	<i>CSUM (wChecksum)</i>	1	-	CSUM means the XOR values of all bytes in the command

Response Data Format

Offset	Field	Size	Value	Description
0	<i>bMessageType</i>	1	11h	-
1	<i>LEN1 LEN2 (wLength)</i>	2	-	Number of extra bytes starting from the next field for this message, and is expressed in two bytes long, and LEN1 is LSB while LEN2 is MSB
3	<i>APDU Response</i>	N	-	APDU Format Data
3+N	<i>CSUM (wChecksum)</i>	1	-	CSUM means the XOR values of all bytes in the command

Example:

Request = 6F 06 00 80 84 00 00 08 65

Response = 11 0B 00 C1 7A 3B AA D6 5A FA CE 90 00 18



6.5.5. APDU2 Command (From FW v1.20 and later)

This command sends an APDU command which support extended APDU to the reader.

Command Format

Offset	Field		Size	Value	Description
0	<i>bMessageType</i>		1	67h	-
1	<i>LEN1 LEN2 (wLength)</i>		2	-	Number of extra bytes starting from the next field for this message, and is expressed in two bytes long, and LEN1 is LSB while LEN2 is MSB
3	<i>Data</i>	<i>Param</i>	1	-	Parameter: Short APDU level 00h – default Extended APDU level 00h – the command APDU begins and ends with this command. 01h – the command APDU begins with this command and continues in next APDU command. 02h – this Data field continues a command APDU and ends the APDU command. 03h – this Data field continues a command APDU and another block is to follow. 10h – empty Data field, continuation of response APDU is expected in the next Response.
4		<i>APDU CMD</i>	N	-	APDU Command
4+N	<i>CSUM (wChecksum)</i>		1	-	CSUM means the XOR values of all bytes in the Data



Response Data Format

Offset	Field		Size	Value	Description
0	<i>bMessageType</i>		1	17h	-
1	<i>LEN1 LEN2 (wLength)</i>		2	-	Number of extra bytes starting from the next field for this message, and is expressed in two bytes long, and LEN1 is LSB while LEN2 is MSB
3	<i>Data</i>	<i>Param</i>	1	-	Parameter: Short APDU level 00h – default Extended APDU level 00h – the response APDU begins and ends with this command. 01h – the response APDU begins with this command and is to continue. 02h – this Data field continues the response APDU and ends the response APDU. 03h – this Data field continues the response APDU and another block is to follow. 10h – empty Data field, continuation of the command APDU is expected in the next Command.
4		<i>APDU RSP</i>	N	-	APDU Response
4+N	<i>CSUM (wChecksum)</i>		1	-	CSUM means the XOR values of all bytes in the Data

Example:

Sends 600 bytes data to the card

1. Command = 67 00 01 01 (256 bytes data) checksum
Response = 17 00 00 10 checksum
2. Command = 67 00 01 03 (256 bytes data) checksum
Response = 17 00 00 10 checksum
3. Command = 67 58 00 02 (88 bytes data) checksum
Response = 17 02 00 00 90 00 checksum

Receives 600 bytes data from the card

1. Command = 67 07 00 00 00 B0 87 00 00 02 58 checksum
Response = 17 00 01 01 (256 bytes data) checksum
2. Command = 67 00 00 10 checksum
Response = 17 00 01 03 (256 bytes data) checksum
3. Command = 67 00 00 10 checksum
Response = 17 5A 00 02 (88 bytes data) 90 00 checksum



6.5.6. Escape Command

This command gives access the extended features of the reader.

Command Format

Offset	Field		Size	Value	Description
0	<i>bMessageType</i>		1	6Bh	Escape CMD Header
1	<i>LEN1 LEN2 (wLength)</i>		2	-	Number of extra bytes starting from the next field for this message, and is expressed in two bytes long, and LEN1 is LSB while LEN2 is MSB
3	<i>abData1</i>	<i>CommandCode</i>	1	-	Command Header
4		<i>Len (CommandLength)</i>	1	-	Number of extra bytes starting from the next field for this message, and is expressed in one byte long
5		<i>Data</i>	N	-	0 ≤ N ≤ 255
5+N	<i>CSUM (wChecksum)</i>		1	-	CSUM means the XOR values of all bytes in the command

Response Data Format

Offset	Field		Size	Value	Description
0	<i>bMessageType</i>		1	15h	Escape Response Header
1	<i>LEN1 LEN2 (wLength)</i>		2	-	Number of extra bytes starting from the next field for this message, and is expressed in two bytes long, and LEN1 is LSB while LEN2 is MSB
3	<i>abData2</i>	<i>ResponseCode</i>	1	-	Response Header
4		<i>Len (CommandLength)</i>	1	-	Number of extra bytes starting from the next field for this message, and is expressed in one byte long
5		<i>Data</i>	N	-	0 ≤ N ≤ 255
5+N	<i>CSUM (wChecksum)</i>		1	-	CSUM means the XOR values of all bytes in the command

6.5.7. Card Set Parameters

This command changes the parameters for the inserted card after power on.

Command Format

Offset	Field		Size	Value	Description
0	<i>bMessageType</i>		1	61h	-
1	<i>LEN1 LEN2 (wLength)</i>		2	-	Number of extra bytes starting from the next field for this message, and is expressed in two bytes long, and LEN1 is LSB while LEN2 is MSB
3	<i>abData1</i>	<i>ProtocolNum</i>	1	-	Card Protocol data structure: 00h = Structure for protocol T=0 01h = Structure for protocol T=1
4		<i>ProtocolDataStructure</i>	N	-	Protocol Data Structure
4+N	<i>CSUM (wChecksum)</i>		1	-	CSUM means the XOR values of all bytes in the command

Response Data Format

Offset	Field		Size	Value	Description
0	<i>bMessageType</i>		1	16h	Escape Response Header
1	<i>LEN1 LEN2 (wLength)</i>		2	-	Number of extra bytes starting from the next field for this message, and is expressed in two bytes long, and LEN1 is LSB while LEN2 is MSB
3	<i>abData2</i>	<i>ProtocolNum</i>	1	-	Card Protocol data structure: 00h = Structure for protocol T=0 01h = Structure for protocol T=1
4		<i>ProtocolDataStructure</i>	N	-	Protocol Data Structure
4+N	<i>CSUM (wChecksum)</i>		1	-	CSUM means the XOR values of all bytes in the command

Protocol Data Structure for Protocol T=0 (ProtocolNum = 0, wLength = 0700h)

Offset	Field	Size	Value	Description
4	<i>bmFindexDindex</i>	1	-	B7-4 – FI – Index into the table 7 in ISO/IEC 7816-3:1997 selecting a clock rate conversion factor. B3-0 – DI – Index into the table 8 in ISO/IEC 7816-3:1997 selecting a baud rate conversion factor.



Offset	Field	Size	Value	Description
5	<i>bmTCKST0</i>	1	-	B0 – 0b, B7-2 – 000000b B1 – Convention used (b1=0 for direct, b1=1 for inverse) Note: The CCID ignores this bit.
6	<i>bGuardTimeT0</i>	1	-	Extra Guardtime between two characters. Add 0 to 254 etu to the normal guardtime of 12 etu. FFh is the same as 00h.
7	<i>bWaitingIntegerT0</i>	1	-	WI for T=0 used to define WWT
8	<i>bClockStop</i>	1	-	ICC Clock Stop Support 00h = Stopping the Clock is not allowed 01h = Stop with Clock signal Low 02h = Stop with Clock signal High 03h = Stop with Clock either High or Low

Protocol Data Structure for Protocol T=1 (ProtocolNum = 1, wLength = 0900h)

Offset	Field	Size	Value	Description
4	<i>bmFindexDindex</i>	1	-	B7-4 – FI – Index into the table 7 in ISO/IEC 7816-3:1997 selecting a clock rate conversion factor. B3-0 – DI – Index into the table 8 in ISO/IEC 7816-3:1997 selecting a baud rate conversion factor.
5	<i>BmTCKST1</i>	1	-	B7-2 – 000100b B0 – Checksum type (b0=0 for LRC, b0=1 for CRC) B1 – Convention used (b1=0 for direct, b1=1 for inverse) Note: The CCID ignores this bit.
6	<i>BGuardTimeT1</i>	1	-	Extra Guardtime (0 to 254 etu between two characters). If value is FFh, then guardtime is reduced by 1 etu.
7	<i>BwaitingIntegerT1</i>	1	-	B7-4 = BWI values 0-9 valid B3-0 = CWI values 0-Fh valid
8	<i>bClockStop</i>	1	-	ICC Clock Stop Support 00h = Stopping the Clock is not allowed 01h = Stop with Clock signal Low 02h = Stop with Clock signal High 03h = Stop with Clock either High or Low
9	<i>bIFSC</i>	1	-	Size of negotiated IFSC
10	<i>bNadValue</i>	1	00h	Only support NAD = 00h



Example: (T0 protocol)

Request = 61 07 00 00 11 00 00 0A 00 7D

Response = 16 07 00 00 11 00 00 0A 00 0A

Example: (T1 protocol)

Request = 61 09 00 01 96 10 00 45 00 FE 00 54

Response = 16 09 00 01 96 10 00 45 00 FE 00 23

6.6. Mutual Authentication and Encryption Protocol

In Bluetooth mode, the communication protocol will be encrypted and transmitted after a successful mutual authentication.

Command	Mode supported	Sender	Description
70h	Connected	Paired device	SPH_to_RDR_ReqAuth
71h	Connected	Paired device	SPH_to_RDR_AuthRsp
72h	Authenticated	Paired device	SPH_to_RDR_DataReq
20h	Connected	Reader	RDR_to_SPH_AuthRsp1
21h	Connected	Reader	RDR_to_SPH_AuthRsp2
22h	Authenticated	Reader	SPH_to_RDR_DataRsp

Table 11: Summary of Mutual Authentication Commands

6.6.1. SPH_to_RDR_ReqAuth

This command will request ACR3901U-S1 to perform authentication with the paired key-generating device.

For more information on the authentication process, please refer to [Authentication](#).

Offset	Field	Size	Value	Description	Encrypted
0	<i>bMessageType</i>	1	70h	-	No
1	<i>LEN1 LEN2 (wLength)</i>	2	0100h	Number of extra bytes starting from the next field for this message, and is expressed in two bytes long, and LEN1 is LSB while LEN2 is MSB	
3	<i>wChecksum</i>	1	71h	CSUM means the XOR values of all bytes in the command	

The response to this message is *RDR_to_SPH_AuthRsp1* if the received command message is error free.



6.6.2. RDR_to_SPH_AuthRsp1

This command is sent by the paired device in response to the *SPH_to_RDR_ReqAuth*.

For more information, please refer to [Authentication](#).

Offset	Field	Size	Value	Description	Encrypted
0	<i>bMessageType</i>	1	20h	-	No
1	<i>LEN1 LEN2</i> (<i>wLength</i>)	2	1100h	Number of extra bytes starting from the next field for this message, and is expressed in two bytes long, and LEN1 is LSB while LEN2 is MSB	No
4	<i>abRndNum</i>	16	-	abRndNum[0:15] – 16 bytes of random number. All the 16-byte data must be encrypted with the Customer Master Key currently stored in ACR3901U-S1.	Yes
20	<i>wChecksum</i>	1	-	CSUM means the XOR values of all bytes in the command	No

6.6.3. SPH_to_RDR_AuthRsp

This command is the second phase of the authentication process. After the device has initiated the *SPH_to_RDR_ReqAuth* command to the ACR3901U-S1, the reader will then provide an *RDR_to_SPH_AuthRsp1* message if there's no error.

The *RDR_to_SPH_AuthRsp1* will contain a sequence of 16-byte random numbers encrypted using the Customer Master Key. The paired key-generating device should decrypt it using the correct Customer Master Key and pads it to the end of the 16-byte of random numbers. The overall 32-byte random numbers will be decrypted using the Customer Master Key and return it to the ACR3901U-S1 using this command in order to have a successful authentication.

For more information on the authentication process, please refer to [Authentication](#).

Offset	Field	Size	Value	Description	Encrypted
0	<i>bMessageType</i>	1	71h	-	No
1	<i>LEN1 LEN2</i> (<i>wLength</i>)	2	2100h	Number of extra bytes starting from the next field for this message, and is expressed in two bytes long, and LEN1 is LSB while LEN2 is MSB	No



Offset	Field	Size	Value	Description	Encrypted
3	<i>abAuthData</i>	32	-	abAuthData[0:15] – 16 bytes of random number generated by the data processing server. abAuthData[16:31] – 16 bytes of decrypted random number received from ACR3901U-S1. All the 32 bytes of data will be decrypted with the Customer Master Key using AES128 CBC cipher mode	Yes
35	<i>wChecksum</i>	1	-	CSUM means the XOR values of all bytes in the command	No

The response to this message is *RDR_to_SPH_AuthRsp2* if the command message received is error free and the random number generated returned by the ACR3901U-S1 is correct.

6.6.4. RDR_to_SPH_AuthRsp2

This command is sent by the paired device in response to the *SPH_to_RDR_AuthRsp*.

For more information, please refer to [Authentication](#).

Offset	Field	Size	Value	Description	Encrypted
0	<i>bMessageType</i>	1	21h	-	No
1	<i>LEN1 LEN2</i> (<i>wLength</i>)	2	1100h	Number of extra bytes starting from the next field for this message, and is expressed in two bytes long, and LEN1 is LSB while LEN2 is MSB	No
4	<i>abRndNum</i>	16		abRndNum[0:15] – 16 bytes of random number retrieved from the data processing server. All the 16-byte data must be encrypted with the Customer Master Key that is currently stored in ACR3901U-S1.	Yes
20	<i>wCheckSum</i>	1		CSUM means the XOR values of all bytes in the command	No

6.6.5. SPH_to_RDR_DataReq

This command is sent from the paired device to the ACR3901U-S1 after the mutual authentication process.

In Bluetooth mode, the communication protocol from **Card Power On** to **Card Set Parameter** will be encrypted and transmitted after a successful mutual authentication.

Offset	Field	Size	Value	Description	Encrypted
0	<i>bMessageType</i>	1	72h	-	No
1	<i>LEN1 LEN2</i> (<i>wLength</i>)	2	-	Number of extra bytes starting from the next field for this message, and is expressed in two bytes long, and LEN1 is LSB while LEN2 is MSB	No
3	<i>abEncryptedData</i>	N*16	-	Each 16 bytes of data will be encrypted with the Session Key using AES128 CBC cipher mode	Yes
35	<i>wChecksum</i>	1	-	CSUM means the XOR values of all bytes in the command	No

abEncryptedData is N*16 bytes long. This is the encrypted data of (Identifiers + Length + Payload + Checksum), wherein each byte will be encrypted with the Session Key which is generated after mutual authentication using the AES128 CBC cipher mode.

The initial vector is 16bytes of 00h in AES-128 CBC cipher mode.

For original data with data length < N*16, simply pad FFh in the end and make it a 16*N byte long before encrypting.

HID Frame	Length (bytes)	Description
Identifiers	1	Commands
Length	2	Length {Payload+Checksum}
Payload	0-N	Data
Checksum	1	XOR {Identifiers,Length,Payload}

The real data is decrypted using *abEncryptedData* and remove the dummy data

Example:

After a successful Mutual Authentication, paired device sends a power on command to the reader, the command will be:

72 11 00 XX XX XX XX XX XX XX XX XX XX XX XX XX XX XX

Where:

Command header: 72

Encrypted data of the power on command (16 bytes): XX XX XX XX XX XX XX XX XX XX XX XX XX XX XX XX XX XX

The response to this message is the RDR_to_SPH_DataRsp if the command message received is error free.

abEncryptedData is the encrypted data of the Communication Protocol. Each 16 bytes of data will be encrypted with the Session Key using the AES-128 CBC cipher mode.



6.6.6. RDR_to_SPH_DataRsp

This command is sent from the reader to the paired device after a successful mutual authentication.

In Bluetooth mode, the communication protocol from **Card Power On** to **Card Set Parameters** will be encrypted and transmitted after a successful mutual authentication.

Offset	Field	Size	Value	Description	Encrypted
0	<i>bMessageType</i>	1	22h	-	No
1	<i>LEN1 LEN2</i> (<i>wLength</i>)	2	-	The number of extra bytes starting from the next field for this message, and is expressed in two bytes long, and LEN1 is LSB while LEN2 is MSB	No
3	<i>abEncryptedData</i>	N*16	-	Each 16 bytes of data will be encrypted with the Session Key using AES128 CBC cipher mode	Yes
35	<i>wChecksum</i>	1	-	CSUM means the XOR values of all bytes in the command	No

7.0. USB Communication Protocol

ACR3901U-S1 shall interface with the host through the USB connection. A specification, namely CCID, has been released within the industry defining such a protocol for the USB chip-card interface devices. CCID covers all the protocols required for operating smart cards.

The configurations and usage of USB endpoints on ACR3901U-S1 shall follow CCID Rev 1.0 Section 3.

An overview is summarized below:

1. *Control Commands* are sent on control pipe (default pipe). These include class-specific requests and USB standard requests. Commands that are sent on the default pipe report information back to the host on the default pipe.
2. *CCID Events* are sent on the interrupt pipe.
3. *CCID Commands* are sent on BULK-OUT endpoint. Each command sent to ACR3901U-S1 has an associated ending response. Some commands can also have intermediate responses.
4. *CCID Responses* are sent on BULK-IN endpoint. All commands sent to ACR3901U-S1 have to be sent synchronously (e.g., *bMaxCCIDBusySlots* is equal to 01h for ACR3901U-S1).

The ACR3901U-S1 supported CCID features are indicated in its Class Descriptor:

Offset	Field	Size	Value	Description
0	<i>bLength</i>	1	-	Size of this descriptor, in bytes
1	<i>bDescriptorType</i>	1	-	CCID Functional Descriptor type
2	<i>bcdCCID</i>	2	-	CCID Specification Release Number in Binary-coded decimal
4	<i>bMaxSlotIndex</i>	1	-	One slot is available on ACR3901U-S1
5	<i>bVoltageSupport</i>	1	-	ACR3901U-S1 can supply 1.8 V, 3 V, and 5 V to its slot
6	<i>dwProtocols</i>	4	-	ACR3901U-S1 supports T=0 and T=1 protocol
10	<i>dwDefaultClock</i>	4	-	Default ICC clock frequency is 4.8 MHz
14	<i>dwMaximumClock</i>	4	-	Maximum supported ICC clock frequency is 4.8 MHz
18	<i>bNumClockSupported</i>	1	-	Does not support manual setting of clock frequency
19	<i>dwDataRate</i>	4	-	Default ICC I/O data rate is 12903 bps
23	<i>dwMaxDataRate</i>	4	-	Maximum supported ICC I/O data rate is 600 Kbps
27	<i>bNumDataRatesSupported</i>	1	-	Does not support manual setting of data rates
28	<i>dwMaxIFSD</i>	4	-	Maximum IFSD supported by ACR3901U-S1 for protocol T=1 is 254
32	<i>dwSynchProtocols</i>	4	-	ACR3901U-S1 does not support synchronous card
36	<i>dwMechanical</i>	4	-	ACR3901U-S1 does not support special mechanical characteristics

Offset	Field	Size	Value	Description
40	<i>dwFeatures</i>	4	-	ACR3901U-S1 supports the following features: <ul style="list-style-type: none"> Automatic ICC clock frequency change according to parameters Automatic baud rate change according to frequency and FI,DI parameters TPDU level change with ACR3901U-S1
44	<i>dwMaxCCIDMessageLength</i>	4	-	Maximum message length accepted by ACR3901U-S1 is 271 bytes
48	<i>bClassGetResponse</i>	1	-	Insignificant for TPDU level exchanges
49	<i>bClassEnvelope</i>	1	-	Insignificant for TPDU level exchanges
50	<i>wLCDLayout</i>	2	-	No LCD
52	<i>bPINSupport</i>	1	-	With PIN Verification
53	<i>bMaxCCIDBusySlots</i>	1	-	Only 1 slot can be simultaneously busy

7.1. CCID Bulk-OUT Messages

7.1.1. PC_to_RDR_IccPowerOn

This command activates the card slot and returns ATR from the card.

Offset	Field	Size	Value	Description
0	<i>bMessageType</i>	1	62h	-
1	<i>dwLength</i>	4	00000000h	Size of extra bytes of this message
2	<i>bSlot</i>	1	-	Identifies the slot number for this command
5	<i>bSeq</i>	1	-	Sequence number for command
6	<i>bPowerSelect</i>	1	-	Voltage that is applied to the ICC: 00h = Automatic Voltage Selection 01h = 5 V 02h = 3 V
7	<i>abRFU</i>	2	-	Reserved for future use

The response to this command message is *RDR_to_PC_DataBlock* response message and the data returned is the Answer-to-Reset (ATR) data.

7.1.2. PC_to_RDR_IccPowerOff

This command deactivates the card slot.

Offset	Field	Size	Value	Description
0	<i>bMessageType</i>	1	63h	-
1	<i>dwLength</i>	4	00000000h	Size of extra bytes of this message
5	<i>bSlot</i>	1	-	Identifies the slot number for this command
6	<i>bSeq</i>	1	-	Sequence number for command
7	<i>abRFU</i>	3	-	Reserved for future use

The response to this message is the *RDR_to_PC_SlotStatus* message.

7.1.3. PC_to_RDR_GetSlotStatus

This command gets the current status of the slot.

Offset	Field	Size	Value	Description
0	<i>bMessageType</i>	1	65h	-
1	<i>dwLength</i>	4	00000000h	Size of extra bytes of this message
5	<i>bSlot</i>	1	-	Identifies the slot number for this command
6	<i>bSeq</i>	1	-	Sequence number for command
7	<i>abRFU</i>	3	-	Reserved for future use

The response to this message is the *RDR_to_PC_SlotStatus* message.

7.1.4. PC_to_RDR_XfrBlock

This command transfers data block to the ICC.

Offset	Field	Size	Value	Description
0	<i>bMessageType</i>	1	6Fh	-
1	<i>dwLength</i>	4	-	Size of <i>abData</i> field of this message.
5	<i>bSlot</i>	1	-	Identifies the slot number for this command.
6	<i>bSeq</i>	1	-	Sequence number for command.
7	<i>bBWI</i>	1	-	Used to extend the CCIDs Block Waiting Timeout for this current transfer. The CCID will timeout the block after "this number multiplied by the Block Waiting Time" has expired.

Offset	Field	Size	Value	Description
8	<i>wLevelParameter</i>	2	-	<p>Short APDU level, RFU = 0000h</p> <p>Extended APDU level: 0000h – the command APDU begins and ends with this command. 0001h – the command APDU begins with this command, and continues in the next PC_to_RDR_XfrBlock. 0002h – the abData field continues a command APDU and ends the APDU command. 0003h – the abData field continues a command APDU and another block is to follow. 0010h – empty abData field, continuation of response APDU is expected in the next RDR_to_PC_DataBlock.</p>
10	<i>abData</i>	Byte array	-	Data block sent to the CCID.

The response to this message is the *RDR_to_PC_DataBlock* message.

7.1.5. PC_to_RDR_GetParameters

This command gets the slot parameters.

Offset	Field	Size	Value	Description
0	<i>bMessageType</i>	1	6Ch	-
1	<i>DwLength</i>	4	00000000h	Size of extra bytes of this message
5	<i>BSlot</i>	1	-	Identifies the slot number for this command
6	<i>BSeq</i>	1	-	Sequence number for command
7	<i>AbRFU</i>	3	-	Reserved for future use

The response to this message is the *RDR_to_PC_Parameters* message.

7.1.6. PC_to_RDR_ResetParameters

This command resets slot parameters to its default value.

Offset	Field	Size	Value	Description
0	<i>bMessageType</i>	1	6Dh	-
1	<i>DwLength</i>	4	00000000h	Size of extra bytes of this message
5	<i>BSlot</i>	1	-	Identifies the slot number for this command
6	<i>BSeq</i>	1	-	Sequence number for command
7	<i>AbRFU</i>	3	-	Reserved for future use

The response to this message is the *RDR_to_PC_Parameters* message.

7.1.7. PC_to_RDR_SetParameters

This command sets slot parameters.

Offset	Field	Size	Value	Description
0	<i>bMessageType</i>	1	61h	-
1	<i>dwLength</i>	4	-	Size of extra bytes of this message
5	<i>bSlot</i>	1	-	Identifies the slot number for this command
6	<i>bSeq</i>	1	-	Sequence number for command
7	<i>bProtocolNum</i>	1	-	Specifies what protocol data structure follows: 00h = Structure for protocol T=0 01h = Structure for protocol T=1 The following values are reserved for future use: 80h = Structure for 2-wire protocol 81h = Structure for 3-wire protocol 82h = Structure for I2C protocol
8	<i>abRFU</i>	2	-	Reserved for future use
10	<i>abProtocolDataStructure</i>	Byte array	-	Protocol Data Structure



Protocol Data Structure for Protocol T=0 (dwLength=00000005h)

Offset	Field	Size	Value	Description
10	<i>bmFindexDindex</i>	1	-	B7-4 – FI – Index into the table 7 in ISO/IEC 7816-3:1997 selecting a clock rate conversion factor. B3-0 – DI – Index into the table 8 in ISO/IEC 7816-3:1997 selecting a baud rate conversion factor.
11	<i>bmTCKKST0</i>	1	-	B0 – 0b, B7-2 – 000000b B1 – Convention used (b1=0 for direct, b1=1 for inverse) Note: The CCID ignores this bit.
12	<i>bGuardTimeT0</i>	1	-	Extra Guardtime between two characters. Add 0 to 254 etu to the normal guardtime of 12 etu. FFh is the same as 00h.
13	<i>bWaitingIntegerT0</i>	1	-	WI for T=0 used to define WWT
14	<i>bClockStop</i>	1	-	ICC Clock Stop Support 00h = Stopping the Clock is not allowed 01h = Stop with Clock signal Low 02h = Stop with Clock signal High 03h = Stop with Clock either High or Low

Protocol Data Structure for Protocol T=1 (dwLength=00000007h)

Offset	Field	Size	Value	Description
10	<i>bmFindexDindex</i>	1	-	B7-4 – FI – Index into the table 7 in ISO/IEC 7816-3:1997 selecting a clock rate conversion factor. B3-0 – DI – Index into the table 8 in ISO/IEC 7816-3:1997 selecting a baud rate conversion factor.
11	<i>BmTCKKST1</i>	1	-	B7-2 – 000100b B0 – Checksum type (b0=0 for LRC, b0=1 for CRC) B1 – Convention used (b1=0 for direct, b1=1 for inverse) Note: The CCID ignores this bit.
12	<i>BGuardTimeT1</i>	1	-	Extra Guardtime (0 to 254 etu between two characters). If value is FFh, then guardtime is reduced by 1 etu.
13	<i>BwaitingIntegerT1</i>	1	-	B7-4 = BWI values 0-9 valid B3-0 = CWI values 0-Fh valid

Offset	Field	Size	Value	Description
14	<i>bClockStop</i>	1	-	ICC Clock Stop Support 00h = Stopping the Clock is not allowed 01h = Stop with Clock signal Low 02h = Stop with Clock signal High 03h = Stop with Clock either High or Low
15	<i>bIFSC</i>	1	-	Size of negotiated IFSC
16	<i>bNadValue</i>	1	00h	Only support NAD = 00h

The response to this message is the *RDR_to_PC_Parameters* message.

7.2. CCID Bulk-IN Messages

7.2.1. RDR_to_PC_DataBlock

This message is sent by ACR3901U-S1 in response to *PC_to_RDR_IccPowerOn*, and *PC_to_RDR_XfrBlock* messages.

Offset	Field	Size	Value	Description
0	<i>bMessageType</i>	1	80h	Indicates that a data block is being sent from the CCID
1	<i>dwLength</i>	4	-	Size of extra bytes of this message
5	<i>bSlot</i>	1	-	Same value as in Bulk-OUT message
6	<i>bSeq</i>	1	-	Same value as in Bulk-OUT message
7	<i>bStatus</i>	1	-	Slot status register as defined in CCID Rev 1.1 Section 6.2.1
8	<i>bError</i>	1	-	Slot error register as defined in Error Codes and in CCID Rev 1.1 Section 6.2.6
9	<i>bChainParameter</i>	1	-	Short APDU level, RFU = 00h Extended APDU level: 00h – the response APDU begins and ends in this command. 01h – the response APDU begins with this command, and is to continue. 02h – this <i>abData</i> field continues the response APDU and ends the response APDU. 03h – this <i>abData</i> field continues the response APDU and another block is to follow. 10h – empty <i>abData</i> field, continuation of command APDU is expected in the next <i>PC_to_RDR_XfrBlock</i> command.
10	<i>abData</i>	Byte array	-	This field contains the data returned by the CCID



7.2.2. RDR_to_PC_SlotStatus

This message is sent by ACR3901U-S1 in response to *PC_to_RDR_IccPowerOff*, and *PC_to_RDR_GetSlotStatus* messages.

Offset	Field	Size	Value	Description
0	<i>bMessageType</i>	1	81h	-
1	<i>dwLength</i>	4	00000000h	Size of extra bytes of this message
5	<i>bSlot</i>	1	-	Same value as in Bulk-OUT message
6	<i>bSeq</i>	1	-	Same value as in Bulk-OUT message
7	<i>bStatus</i>	1	-	Slot status register as defined in CCID Rev 1.0 Section 4.2.1
8	<i>bError</i>	1	-	Slot error register as defined in Error Codes and in CCID Rev 1.0 Section 4.2.1
9	<i>bClockStatus</i>	1	-	Value: 00h = Clock running 01h = Clock stopped in state L 02h = Clock stopped in state H 03h = Clock stopped in an unknown state All other values are RFU



7.2.3. RDR_to_PC_Parameters

This message is sent by ACR3901U-S1 in response to *PC_to_RDR_GetParameters*, *PC_to_RDR_ResetParameters* and *PC_to_RDR_SetParameters* messages.

Offset	Field	Size	Value	Description
0	<i>bMessageType</i>	1	82h	-
1	<i>dwLength</i>	4	-	Size of extra bytes of this message
5	<i>bSlot</i>	1	-	Same value as in Bulk-OUT message
6	<i>bSeq</i>	1	-	Same value as in Bulk-OUT message
7	<i>bStatus</i>	1	-	Slot status register as defined in CCID Rev 1.0 Section 4.2.1
8	<i>bError</i>	1	-	Slot error register as defined in Error Codes and in CCID Rev 1.0 Section 4.2.1
9	<i>bProtocolNum</i>	1	-	Specifies what protocol data structure follows: 00h = Structure for protocol T=0 01h = Structure for protocol T=1 The following values are reserved for future use: 80h = Structure for 2-wire protocol 81h = Structure for 3-wire protocol 82h = Structure for I2C protocol
10	<i>abProtocolDataStructure</i>	Byte array	-	Protocol Data Structure as summarized in CCID Rev 1.0 Section 5.2.3

8.0. Smart Card Protocol

8.1. Peripherals Control

The reader's peripherals control commands are implemented by using Escape Command (0x6B) in Bluetooth mode or PC_to_RDR_Escape in USB mode.

8.1.1. Get Serial Number Command

This command reads the unique serial number of the reader.

Command Format

Offset	Field		Size	Value	Description
0	abData1	CommandCode	1	02h	Command Code of Write Serial Number
1		Len (CommandLength)	1	00h	Number of extra bytes of data
2		Data	0	-	-

Response Format

Offset	Field		Size	Value	Description
0	abData2	ResponseCode	1	82h	Response Code of Write Serial Number
1		Len (CommandLength)	1	-	Number of extra bytes of data
2		Data	10	-	Number of bytes of Serial Number

Example:

Request = 02 00

Response = 82 0A FF FF FF FF FF FF FF FF FF FF

Serial Number: FF FF FF FF FF FF FF FF FF FF



8.1.2. Get Random Number Command

This command reads the random number from the reader that is used to encrypt with the Master Key for authentication by the AES Encryption algorithm.

Note: This command is applicable for Bluetooth Mode Only

Command Format

Offset	Field		Size	Value	Description
0	abData1	CommandCode	1	03h	Command Code of Get Random Number
1		Len (CommandLength)	1	00h	Number of extra bytes of data
2		Data	0	-	-

Response Format

Offset	Field		Size	Value	Description
0	abData2	ResponseCode	1	83h	Response Code of Get Random Number
1		Len (CommandLength)	1	10h	Number of extra bytes of data
2		Data	16	-	16 bytes of Random Number

Example:

Request = 03 00

Response = 83 10 F2 8F B7 EF BA 43 C4 6B 85 D8 51 7B 84 08 C3 25



8.1.3. Get Firmware Version Command

This command gets the firmware version of the reader.

Command Format

Offset	Field		Size	Value	Description
0	abData1	CommandCode	1	04h	Command Code of Get Firmware Version
1		Len (CommandLength)	1	00h	Number of extra bytes of data
2		Data	0	-	-

Response Format

Offset	Field		Size	Value	Description
0	abData2	ResponseCode	1	84h	Response Code of Get Firmware Version
1		Len (CommandLength)	1	05h	Number of extra bytes of data
2		Data	N	-	Number of bytes of Firmware Version in the format of "Vx.xx"

Example:

Request = 04 00

Response = 84 05 56 31 2E 31 34

Firmware Version (HEX) = 56 31 2E 31 34

Firmware Version (ASCII) = "V1.14"



8.1.4. Rewrite Master Key Command

This command rewrites the master key to the reader. It is required to be encrypted by the old key using the AES encryption algorithm.

Command Format

Offset	Field		Size	Value	Description
0	abData1	CommandCode	1	07h	Command Code of Rewrite Master Key
1		Len (CommandLength)	1	20h	Number of extra bytes of data
2		Data	32	-	Combine the random number (KeyRstRnd[0:15]) encrypted by original Customer Master Key + 16 byte of new Customer Master Key encrypted by the original Customer Master Key

Response Format

Offset	Field		Size	Value	Description
0	abData2	ResponseCode	1	87h	Response Code of Rewrite Master Key
1		Len (CommandLength)	1	01h	Number of extra bytes of data
2		Data	1	-	00h = Success 01h = Fail

Example:

Refer to [Customer Master Key Request](#) for more details.



8.1.5. Sleep Mode Option

This command sets the time interval of the device before it enters sleep mode. By default, the reader will enter to sleep mode if the reader is idle for 60 seconds.

Command Format

Offset	Field		Size	Value	Description
0	abData1	CommandCode	1	0Dh	Command Code of Sleep Mode Option
1		Len (CommandLength)	1	01h	Number of extra bytes of data
2		Data	1	-	00h = 60 seconds (Default) 01h = 90 seconds 02h = 120 seconds 03h = 180 seconds 04h = Disable

Response Format

Offset	Field		Size	Value	Description
0	abData2	ResponseCode	1	8Dh	Response Code of Sleep Mode Option
1		Len (CommandLength)	1	01h	Number of extra bytes of data
2		Data	1	-	00h = Success 01h = Fail

Example:

Request to set 90s = 0D 01 01

Response = 8D 01 00



8.1.6. Get Device Address

This command gets the device's Bluetooth address that is to be used in USB mode only.

Command Format

Offset	Field		Size	Value	Description
0	abData1	CommandCode	1	0Eh	Command Code of Get Device Address
1		Len (CommandLength)	1	00h	Number of extra bytes of data
2		Data	0	-	-

Response Format

Offset	Field		Size	Value	Description
0	abData2	ResponseCode	1	8Eh	Response Code of Get Device Address
1		Len (CommandLength)	1	06h	Number of extra bytes of data
2		Data	6	-	6 bytes of Bluetooth address

Example:

Request = 0E 00

Response = 8E 06 AA BB CC DD EE FF

Device address: AA BB CC DD EE FF

8.1.7. Set Tx Power

This command sets the Bluetooth transmission power of the reader.

Command Format

Offset	Field		Size	Value	Description
0	abData1	CommandCode	1	08h	Command Code of Set Tx Power
1		Len (CommandLength)	1	01h	Number of extra bytes of data
2		Data	1	-	00h = -18 dBm (Default), Distance: ~4 meters 01h = -12 dBm Distance: ~7 meters 02h = -6 dBm Distance: ~16 meters 03h = 0 dBm Distance: ~25 meters

Response Format

Offset	Field		Size	Value	Description
0	abData2	ResponseCode	1	88h	Response Code of Set Tx Power
1		Len (CommandLength)	1	01h	Number of extra bytes of data
2		Data	1	-	00h = Success 01h = Fail

Example:

Request = 08 01 00

Response = 88 01 00

8.1.8. Read Tx Power value

This command checks the Bluetooth transmission power of the reader.

Command Format

Offset		Field	Size	Value	Description
0	abData1	CommandCode	1	09h	Command Code of Read Tx Power
1		Len (CommandLength)	1	00h	Number of extra bytes of data
2		Data	0	-	-

Response Format

Offset		Field	Size	Value	Description
0	abData2	ResponseCode	1	89h	Response Code of Read Tx Power
1		Len (CommandLength)	1	01h	Number of extra bytes of data
2		Data	1	-	00h = -18 dBm (Default) Distance: ~4 meters 01h = -12 dBm Distance: ~7 meters 02h = -6 dBm Distance: ~16 meters 03h = 0 dBm Distance: ~25 meters

Example:

Request = 09 00

Response = 89 01 00

8.1.9. Customer Master Key Reset Request

This command requests the reader to generate a random number for the Customer Master Key Reset authentication.

Command Format

Offset		Field	Size	Value	Description
0	abData1	CommandCode	1	0Fh	Command Code of Customer Master Key Reset Request
1		Len (CommandLength)	1	00h	Number of extra bytes of data
2		Data	0	-	-



Response Format

Offset	Field		Size	Value	Description
0	abData2	ResponseCode	1	8Fh	Response Code of Rewrite Master Key
1		Len (CommandLength)	1	10h	Number of extra bytes of data
2		Data	16	-	16 bytes of random number (KeyRSTRnd[0:15]) generated by the reader

Example:

1. Generate random number.

Customer Master Key Reset Request = 0F 00

Customer Master Key Reset Command Response = 8F 10 11 11 11 11 11 11 11 11 11 11 11 11 11 11 11 11

2. Encrypt the random number and new customer master key using the original customer master key by AES128 CBC. This is done by the application's encryption engine and result will be stored for later use.

Random number: 11 11 11 11 11 11 11 11 11 11 11 11 11 11 11 11

Encrypted random number: F1 9F D2 D2 BA 1C 22 E1 6D C1 FE 1B 4B 43 D5 30

New Customer Master key: 11 22 33 44 55 66 77 88 11 22 33 44 55 66 77 88

Encrypted New Customer Master key: 27 E7 DA BE A6 1E 4B CD 29 F6 9B 36 25 05 8E 41

3. Rewrite the Master Key (see **Rewrite Master Key Command**)

Rewrite Master Key Command Request = 07 20 F1 9F D2 D2 BA 1C 22 E1 6D C1 FE 1B 4B 43 D5 30 27 E7 DA BE A6 1E 4B CD 29 F6 9B 36 25 05 8E 41

Rewrite Master Key Command Response = 87 01 00



9.0. Memory Card Command Set

9.1. Memory Card – 1, 2, 4, 8, and 16 kilobit I2C Card

9.1.1. SELECT_CARD_TYPE

This command powers down and up the selected card inserted in the card reader and performs a card reset.

Note: This command can only be used after the logical smart card reader communication has been established using the `SCardConnect()` API. For details of `SCardConnect()` API, please refer to PC/SC specification.

Command Format (*abData* field in the *PC_to_RDR_XfrBlock*)

Pseudo-APDU					
CLA	INS	P1	P2	Lc	Card Type
FFh	A4h	00h	00h	01h	01h

Response Data Format (*abData* field in the *RDR_to_PC_DataBlock*)

SW1	SW2

Where:

SW1 SW2 = 90 00h if no error

9.1.1.1. SELECT_PAGE_SIZE

This command chooses the page size to read the smart card. The default value is 8-byte page write. It will reset to default value whenever the card is removed or the reader is powered off.

Command Format (*abData* field in the *PC_to_RDR_XfrBlock*)

Pseudo-APDU					
CLA	INS	P1	P2	Lc	Page Size
FFh	01h	00h	00h	01h	

Where:

Page size

- = 03h for 8-byte page write
- = 04h for 16-byte page write
- = 05h for 32-byte page write
- = 06h for 64-byte page write
- = 07h for 128-byte page write

Response Data Format (*abData* field in the *RDR_to_PC_DataBlock*)

SW1	SW2

Where:

SW1 SW2 = 90 00h if no error

9.1.1.2. READ_MEMORY_CARD

Command Format (*abData* field in the *PC_to_RDR_XfrBlock*)

Pseudo-APDU				
CLA	INS	Byte Address		MEM_L
		MSB	LSB	
FFh	B0h			

Where:

Byte Address Memory address location of the memory card

MEM_L Length of data to be read from the memory card

Response Data Format (*abData* field in the *RDR_to_PC_DataBlock*)

BYTE 1	BYTE N	SW1	SW2

Where:

BYTE x Data read from memory card

SW1 SW2 = 90 00h if no error

9.1.1.3. WRITE_MEMORY_CARD

Command Format (*abData* field in the *PC_to_RDR_XfrBlock*)

Pseudo-APDU								
CLA	INS	Byte Address		MEM_L	Byte 1	Byte n
		MSB	LSB					
FFh	D0h							

Where:

Byte Address Memory address location of the memory card

MEM_L Length of data to be written to the memory card

Byte x Data to be written to the memory card



Response Data Format (*abData* field in the *RDR_to_PC_DataBlock*)

SW1	SW2

Where:

SW1 SW2 = 90 00h if no error

9.2. Memory Card – 32, 64, 128, 256, 512, and 1024 kilobit I2C Card

9.2.1. SELECT_CARD_TYPE

This command powers down and up the selected card that is inserted in the card reader and performs a card reset.

Note: This command can only be used after the logical smart card reader communication has been established using the *SCardConnect()* API. For details of *SCardConnect()* API, please refer to PC/SC specifications.

Command Format (*abData* field in the *PC_to_RDR_XfrBlock*)

Pseudo-APDU					
CLA	INS	P1	P2	Lc	Card Type
FFh	A4h	00h	00h	01h	02h

Response Data Format (*abData* field in the *RDR_to_PC_DataBlock*)

SW1	SW2

Where:

SW1 SW2 = 90 00h if no error

9.2.2. SELECT_PAGE_SIZE

This command chooses the page size to read the smart card. The default value is 8-byte page write. It will reset to default value whenever the card is removed or the reader is powered off.

Command Format (*abData* field in the *PC_to_RDR_XfrBlock*)

Pseudo-APDU					
CLA	INS	P1	P2	Lc	Page size
FFh	01h	00h	00h	01h	

Where:

Data TPDU to be sent to the card

Page size = 03h for 8-byte page write

 = 04h for 16-byte page write

= 05h for 32-byte page write
= 06h for 64-byte page write
= 07h for 128-byte page write

Response Data Format (*abData* field in the *RDR_to_PC_DataBlock*)

SW1	SW2

Where:

SW1 SW2 = 90 00h if no error

9.2.3. READ_MEMORY_CARD

Command Format (*abData* field in the *PC_to_RDR_XfrBlock*)

Pseudo-APDU				
CLA	INS	Byte Address		MEM_L
		MSB	LSB	
FFh				

Where:

INS = B0h for 32 kilobit, 64 kilobit, 128 kilobit, 256 kilobit and 512 kilobit iic card
= 1011 000*b for 1024 kilobit iic card,
where * is the MSB of the 17 bit addressing

Byte Address Memory address location of the memory card

MEM_L Length of data to be read from the memory card

Response Data Format (*abData* field in the *RDR_to_PC_DataBlock*)

BYTE 1	BYTE N	SW1	SW2

Where:

BYTE x Data read from memory card

SW1 SW2 = 90 00h if no error

9.2.4. WRITE_MEMORY_CARD

Command Format (*abData* field in the *PC_to_RDR_XfrBlock*)

Pseudo-APDU								
CLA	INS	Byte Address		MEM_L	Byte 1	Byte n
		MSB	LSB					
FFh								



Where:

INS = D0h for 32 kilobit, 64 kilobit, 128 kilobit, 256 kilobit, 512 kilobit iic card
= 1101 000*b for 1024 kilobit iic card,
where * is the MSB of the 17 bit addressing

Byte Address Memory address location of the memory card

MEM_L Length of data to be written to the memory card

Byte x Data to be written to the memory card

Response Data Format (*abData* field in the *RDR_to_PC_DataBlock*)

SW1	SW2

Where:

SW1 SW2 = 90 00h if no error

9.3. Memory Card – ATMEL AT88SC153

9.3.1. SELECT_CARD_TYPE

This command powers up and down the selected card that is inserted in the card reader and performs a card reset. It will also select the page size to be 8-byte page write.

Note: This command can only be used after the logical smart card reader communication has been established using the *SCardConnect()* API. For details of *SCardConnect()* API, please refer to PC/SC specifications.

Command Format (*abData* field in the *PC_to_RDR_XfrBlock*)

Pseudo-APDU					
CLA	INS	P1	P2	Lc	Card Type
FFh	A4h	00h	00h	01h	03h

Response Data Format (*abData* field in the *RDR_to_PC_DataBlock*)

SW1	SW2

Where:

SW1 SW2 = 90 00h if no error

9.3.2. READ_MEMORY_CARD

Command Format (*abData* field in the *PC_to_RDR_XfrBlock*)

Pseudo-APDU				
CLA	INS	P1	Byte Address	MEM_L
FFh		00h		

Where:

INS	= B0h for reading zone 00b = B1h for reading zone 01b = B2h for reading zone 10b = B3h for reading zone 11b = B4h for reading fuse
Byte Address	Memory address location of the memory card
MEM_L	Length of data to be read from the memory card

Response Data Format (*abData* field in the *RDR_to_PC_DataBlock*)

BYTE 1	BYTE N	SW1	SW2

Where:

BYTE x	Data read from memory card
SW1 SW2	= 90 00h if no error

9.3.3. WRITE_MEMORY_CARD

Command Format (*abData* field in the *PC_to_RDR_XfrBlock*)

Pseudo-APDU								
CLA	INS	P1	Byte Address	MEM_L	Byte 1	Byte n
FFh		00h						

Where:

INS	= D0h for writing zone 00b = D1h for writing zone 01b = D2h for writing zone 10b = D3h for writing zone 11b = D4h for writing fuse
Byte Address	Memory address location of the memory card
MEM_L	Length of data to be written to the memory card
MEM_D	Data to be written to the memory card



Response Data Format (*abData* field in the *RDR_to_PC_DataBlock*)

SW1	SW2

Where:

SW1 SW2 = 90 00h if no error

9.3.4. VERIFY_PASSWORD

Command Format (*abData* field in the *PC_to_RDR_XfrBlock*)

Pseudo-APDU							
CLA	INS	P1	P2	Lc	Pw(0)	Pw(1)	Pw(2)
FFh	20h	00h		03h			

Where:

Pw(0),Pw(1),Pw(2)

Passwords to be sent to memory card

P2

= 0000 00rp_b

where the two bits “rp” indicate the password to compare

r = 0: Write password,

r = 1: Read password,

p : Password set number,

rp = 01 for the secure code.

Response Data Format (*abData* field in the *RDR_to_PC_DataBlock*)

SW1	SW2 ErrorCnt
90h	

Where:

SW1

= 90h

SW2 (ErrorCnt)

= Error Counter. FFh indicates the verification is correct. 00h indicates the password is locked (or exceeded the maximum number of retries). Other values indicate the current verification has failed.



9.3.5. INITIALIZE_AUTHENTICATION

Command Format (*abData* field in the *PC_to_RDR_XfrBlock*)

Pseudo-APDU								
CLA	INS	P1	P2	Lc	Q(0)	Q(1)	...	Q(7)
FFh	84h	00h	00h	08h				

Where:

Q(0),Q(1)...Q(7) Host random number, 8 bytes

Response Data Format (*abData* field in the *RDR_to_PC_DataBlock*)

SW1	SW2

Where:

SW1 SW2 = 90 00h if no error

9.3.6. VERIFY_AUTHENTICATION

Command Format (*abData* field in the *PC_to_RDR_XfrBlock*)

Pseudo-APDU								
CLA	INS	P1	P2	Lc	Ch(0)	Ch(1)	...	Ch(7)
FFh	82h	00h	00h	08h				

Where:

Ch(0),Ch(1)...Ch(7) Host challenge, 8 bytes

Response Data Format (*abData* field in the *RDR_to_PC_DataBlock*)

SW1	SW2

Where:

SW1 SW2 = 90 00h if no error



9.4. Memory Card – ATMEL AT88C1608

9.4.1. SELECT_CARD_TYPE

This command powers down and up the selected card that is inserted in the card reader and performs a card reset. It will also select the page size to be 16-byte page write.

Note: This command can only be used after the logical smart card reader communication has been established using the SCardConnect() API. For details of SCardConnect() API, please refer to PC/SC specifications.

Command Format (*abData* field in the *PC_to_RDR_XfrBlock*)

Pseudo-APDU					
CLA	INS	P1	P2	Lc	Card Type
FFh	A4h	00h	00h	01h	04h

Response Data Format (*abData* field in the *RDR_to_PC_DataBlock*)

SW1	SW2

Where:

SW1 SW2 = 90 00h if no error

9.4.2. READ_MEMORY_CARD

Command Format (*abData* field in the *PC_to_RDR_XfrBlock*)

Pseudo-APDU				
CLA	INS	Zone Address	Byte Address	MEM_L
FFh				

Where:

INS = B0h for reading user zone

= B1h for reading configuration zone or reading fuse

Zone Address = 0000 0A₁₀A₉A₈b where A₁₀ is the MSB of zone address

= don't care for reading fuse

Byte Address = A₇A₆A₅A₄ A₃A₂A₁A₀b is the memory address location of the memory card

= 1000 0000b for reading fuse

MEM_L Length of data to be read from the memory card



Response Data Format (*abData* field in the *RDR_to_PC_DataBlock*)

BYTE 1	BYTE N	SW1	SW2

Where:

BYTE x Data read from memory card

SW1 SW2 = 90 00h if no error

9.4.3. WRITE_MEMORY_CARD

Command Format (*abData* field in the *PC_to_RDR_XfrBlock*)

Pseudo-APDU								
CLA	INS	Zone Address	Byte Address	MEM_L	Byte 1	Byte n
FFh								

Where:

INS = D0h for writing user zone

= D1h for writing configuration zone or writing fuse

Zone Address = 0000 0A₁₀A₉A₈b where A₁₀ is the MSB of zone address

= Don't care for writing fuse

Byte Address = A₇A₆A₅A₄ A₃A₂A₁A₀b is the memory address location of the memory card

= 1000 0000b for writing fuse

MEM_L Length of data to be written to the memory card

Byte x Data to be written to the memory card

Response Data Format (*abData* field in the *RDR_to_PC_DataBlock*)

SW1	SW2

Where:

SW1 SW2 = 90 00h if no error

9.4.4. VERIFY_PASSWORD

Command Format (*abData* field in the *PC_to_RDR_XfrBlock*)

Pseudo-APDU								
CLA	INS	P1	P2	Lc	Data			
FFh	20h	00h	00h	04h	RP	Pw(0)	Pw(1)	Pw(2)

Where:

Pw(0),Pw(1),Pw(2) Passwords to be sent to memory card
RP = 0000 rp₂p₁p₀b
 where the four bits “rp₂p₁p₀” indicate the password to compare:
 r = 0: Write password,
 r = 1: Read password,
 p₂p₁p₀: Password set number.
 (rp₂p₁p₀ = 0111 for the secure code)

Response Data Format (*abData* field in the *RDR_to_PC_DataBlock*)

SW1	SW2 ErrorCnt
90h	

Where:

SW1 = 90h
SW2 (ErrorCnt) = Error Counter. FFh indicates the verification is correct. 00h indicates the password is locked (or exceeded the maximum number of retries). Other values indicate the current verification has failed.

9.4.5. INITIALIZE_AUTHENTICATION

Command Format (*abData* field in the *PC_to_RDR_XfrBlock*)

Pseudo-APDU								
CLA	INS	P1	P2	Lc	Q(0)	Q(1)	...	Q(7)
FFh	84h	00h	00h	08h				

Where:

Byte Address Memory address location of the memory card
Q(0),Q(1)...Q(7) Host random number, 8 bytes



Response Data Format (*abData* field in the *RDR_to_PC_DataBlock*)

SW1	SW2

Where:

SW1 SW2 = 90 00h if no error

9.4.6. VERIFY_AUTHENTICATION

Command Format (*abData* field in the *PC_to_RDR_XfrBlock*)

Pseudo-APDU								
CLA	INS	P1	P2	Lc	Q1(0)	Q1(1)	...	Q1(7)
FFh	82h	00h	00h	08h				

Where:

Byte Address Memory address location of the memory card

Q1(0),Q1(1)...Q1(7) Host challenge, 8 bytes

Response Data Format (*abData* field in the *RDR_to_PC_DataBlock*)

SW1	SW2

Where:

SW1 SW2 = 90 00h if no error

9.5. Memory Card – SLE4418/SLE4428/SLE5518/SLE5528

9.5.1. SELECT_CARD_TYPE

This command powers up and down the selected card that is inserted in the card reader and performs a card reset.

Note: This command can only be used after the logical smart card reader communication has been established using the *SCardConnect()* API. For details of *SCardConnect()* API, please refer to PC/SC specifications.

Command Format (*abData* field in the *PC_to_RDR_XfrBlock*)

Pseudo-APDU					
CLA	INS	P1	P2	Lc	Card Type
FFh	A4h	00h	00h	01h	05h

Response Data Format (*abData* field in the *RDR_to_PC_DataBlock*)

SW1	SW2

Where:

SW1 SW2 = 90 00h if no error

9.5.2. READ_MEMORY_CARD

Command Format (*abData* field in the *PC_to_RDR_XfrBlock*)

Pseudo-APDU				
CLA	INS	Byte Address		MEM_L
		MSB	LSB	
FFh	B0h			

Where:

MSB Byte Address = 0000 00A₉A₈b is the memory address location of the memory card

LSB Byte Address = A₇A₆A₅A₄ A₃A₂A₁A₀b is the memory address location of the memory card

MEM_L Length of data to be read from the memory card

Response Data Format (*abData* field in the *RDR_to_PC_DataBlock*)

BYTE 1	BYTE N	SW1	SW2

Where:

BYTE x Data read from memory card

SW1, SW2 = 90 00h if no error

9.5.3. READ_PRESENTATION_ERROR_COUNTER_MEMORY_CARD (SLE4428 and SLE5528)

This command is used to read the presentation error counter for the secret code.

Command Format (*abData* field in the *PC_to_RDR_XfrBlock*)

Pseudo-APDU				
CLA	INS	P1	P2	MEM_L
FFh	B1h	00h	00h	03h

Response Data Format (*abData* field in the *RDR_to_PC_DataBlock*)

ERRCNT	DUMMY 1	DUMMY 2	SW1	SW2



Where:

ERRCNT	Error Counter. FFh indicates that the last verification is correct. 00h indicates that the password is locked (exceeded the maximum number of retries). Other values indicate that the last verification has failed.
DUMMY	Two bytes dummy data read from the card
SW1 SW2	= 90 00h if no error

9.5.4. READ_PROTECTION_BIT

Command Format (*abData* field in the *PC_to_RDR_XfrBlock*)

Pseudo-APDU				
CLA	INS	Byte Address		MEM_L
		MSB	LSB	
FFh	B2h			

Where:

MSB Byte Address	= 0000 00A ₉ A ₈ b is the memory address location of the memory card
LSB Byte Address	= A ₇ A ₆ A ₅ A ₄ A ₃ A ₂ A ₁ A ₀ b is the memory address location of the memory card
MEM_L	Length of protection bits to be read from the card, in multiples of 8 bits. Maximum value is 32. $MEM_L = 1 + INT((number\ of\ bits - 1)/8)$

For example, to read 8 protection bits starting from memory 0010h, the following pseudo-APDU should be issued:

FF B2 00 10 01h

Response Data Format (*abData* field in the *RDR_to_PC_DataBlock*)

PROT 1	PROT L	SW1	SW2

Where:

PROT y	Bytes containing the protection bits
SW1, SW2	= 90 00h if no error

The arrangement of the protection bits in the PROT bytes is as follows:

PROT 1								PROT 2								...								
P8	P7	P6	P5	P4	P3	P2	P1	P16	P15	P14	P13	P12	P11	P10	P9	P18	P17

Where:

Px	is the protection bit of BYTE x in the response data
'0'	byte is write protected
'1'	byte can be written

9.5.5. WRITE_MEMORY_CARD

Command Format (*abData* field in the *PC_to_RDR_XfrBlock*)

Pseudo-APDU								
CLA	INS	Byte Address		MEM_L	Byte 1	Byte N
		MSB	LSB					
FFh	D0h							

Where:

- MSB Byte Address** = 0000 00A₉A₈b is the memory address location of the memory card
- LSB Byte Address** = A₇A₆A₅A₄ A₃A₂A₁A₀b is the memory address location of the memory card
- MEM_L** Length of data to be written to the memory card
- Byte x** Data to be written to the memory card

Response Data Format (*abData* field in the *RDR_to_PC_DataBlock*)

SW1	SW2

Where:

- SW1 SW2** = 90 00h if no error

9.5.6. WRITE_PROTECTION_MEMORY_CARD

Each byte specified in the command is used in the card to compare the byte stored in a specified address location. If the data match, the corresponding protection bit is irreversibly programmed to '0'.

Command Format (*abData* field in the *PC_to_RDR_XfrBlock*)

Pseudo-APDU								
CLA	INS	Byte Address		MEM_L	Byte 1	Byte N
		MSB	LSB					
FFh	D1h							

Where:

- MSB Byte Address** = 0000 00A₉A₈b is the memory address location of the memory card
- LSB Byte Address** = A₇A₆A₅A₄ A₃A₂A₁A₀b is the memory address location of the memory card
- MEM_L** Length of data to be written to the memory card
- Byte x** Byte values to be compared with the data in the card starting at *Byte Address*. BYTE 1 is compared with the data at *Byte Address*; BYTE N is compared with the data at (*Byte Address*+N-1).



Response Data Format (*abData* field in the *RDR_to_PC_DataBlock*)

SW1	SW2

Where:

SW1 SW2 = 90 00h if no error

9.5.7. PRESENT_CODE_MEMORY_CARD (SLE4428 and SLE5528)

This command is used to submit the secret code to the memory card to enable the write operation with the SLE4428 and SLE5528 card, the following actions are executed:

1. Search a '1' bit in the presentation error counter and write the bit to '0'.
2. Present the specified code to the card.
3. Try to erase the presentation error counter.

Command Format (*abData* field in the *PC_to_RDR_XfrBlock*)

Pseudo-APDU						
CLA	INS	P1	P2	MEM_L	CODE	
					Byte 1	Byte 2
FFh	20h	00h	00h	02h		

Where:

CODE Two bytes secret code (PIN)

Response Data Format (*abData* field in the *RDR_to_PC_DataBlock*)

SW1	SW2 ErrorCnt
90h	

Where:

SW1 = 90h

SW2 (ErrorCnt) = Error Counter. FFh indicates successful verification. 00h indicates that the password is locked (or exceeded the maximum number of retries). Other values indicate that current verification has failed.



9.6. Memory Card – SLE4432/SLE4442/SLE5532/SLE5542

9.6.1. SELECT_CARD_TYPE

This command powers down and up the selected card that is inserted in the card reader and performs a card reset.

Note: This command can only be used after the logical smart card reader communication has been established using the `SCardConnect()` API. For details of `SCardConnect()` API, please refer to PC/SC specifications.

Command Format (*abData* field in the *PC_to_RDR_XfrBlock*)

Pseudo-APDU					
CLA	INS	P1	P2	Lc	Card Type
FFh	A4h	00h	00h	01h	06h

Response Data Format (*abData* field in the *RDR_to_PC_DataBlock*)

SW1	SW2

Where:

SW1 SW2 = 90 00h if no error

9.6.2. READ_MEMORY_CARD

Command Format (*abData* field in the *PC_to_RDR_XfrBlock*)

Pseudo-APDU				
CLA	INS	P1	Byte Address	MEM_L
FFh	B0h	00h		

Where:

Byte Address = $A_7A_6A_5A_4 A_3A_2A_1A_0b$ is the memory address location of the memory card

MEM_L Length of data to be read from the memory card

Response Data Format (*abData* field in the *RDR_to_PC_DataBlock*)

BYTE 1	BYTE N	SW1	SW2

Where:

BYTE x Data read from memory card

SW1, SW2 = 90 00h if no error

9.6.3. READ_PRESENTATION_ERROR_COUNTER_MEMORY_CARD (SLE 4442 and SLE 5542)

This command is used to read the presentation error counter for the secret code.

Command Format (*abData* field in the *PC_to_RDR_XfrBlock*)

Pseudo-APDU				
CLA	INS	P1	P2	MEM_L
FFh	B1h	00h	00h	04h

Response Data Format (*abData* field in the *RDR_to_PC_DataBlock*)

ERRCNT	DUMMY 1	DUMMY 2	DUMMY 3	SW1	SW2

Where:

- ERRCNT** Error counter. 07h indicates that the last verification is correct. 00h indicates that the password is locked (exceeded the maximum number of retries). Other values indicate that the last verification has failed.
- DUMMY** Three bytes dummy data read from the card
- SW1 SW2** = 90 00h if no error

9.6.4. READ_PROTECTION_BITS

This command is used to read the protection bits for the first 32 bytes.

Command Format (*abData* field in the *PC_to_RDR_XfrBlock*)

Pseudo-APDU				
CLA	INS	P1	P2	MEM_L
FFh	B2h	00h	00h	04h

Response Data Format (*abData* field in the *RDR_to_PC_DataBlock*)

PROT 1	PROT 2	PROT 3	PROT 4	SW1	SW2

Where:

- PROT y** Bytes containing the protection bits from protection memory
- SW1, SW2** = 90 00h if no error

The arrangement of the protection bits in the PROT bytes is as follows:

PROT 1								PROT 2								...							
P8	P7	P6	P5	P4	P3	P2	P1	P16	P15	P14	P13	P12	P11	P10	P9	P18	P17

Where:

P_x is the protection bit of BYTE x in the response data

'0' byte is write protected

'1' byte can be written

9.6.5. WRITE_MEMORY_CARD

Command Format (*abData* field in the *PC_to_RDR_XfrBlock*)

Pseudo-APDU								
CLA	INS	P1	Byte Address	MEM_L	Byte 1	Byte N
FFh	D0h	00h						

Where:

Byte Address = $A_7A_6A_5A_4 A_3A_2A_1A_0b$ is the memory address location of the memory card

MEM_L Length of data to be written to the memory card

Byte x Data to be written to the memory card

Response Data Format (*abData* field in the *RDR_to_PC_DataBlock*)

SW1	SW2

Where:

SW1 SW2 = 90 00h if no error

9.6.6. WRITE_PROTECTION_MEMORY_CARD

Each byte specified in the command is internally in the card compared with the byte stored at the specified address and if the data match, the corresponding protection bit is irreversibly programmed to '0'.

Command Format (*abData* field in the *PC_to_RDR_XfrBlock*)

Pseudo-APDU								
CLA	INS	P1	Byte Address	MEM_L	Byte 1	Byte N
FFh	D1h	00h						

Where:

Byte Address = $000A_4 A_3A_2A_1A_0b$ (00h to 1Fh) is the protection memory address location of the memory card

MEM_L Length of data to be written to the memory card



Byte x

Byte values to be compared with the data in the card starting at Byte Address. BYTE 1 is compared with the data at Byte Address; BYTE N is compared with the data at (Byte Address+N-1).

Response Data Format (*abData* field in the *RDR_to_PC_DataBlock*)

SW1	SW2

Where:

SW1 SW2 = 90 00h if no error

9.6.7. PRESENT_CODE_MEMORY_CARD (SLE 4442 and SLE 5542)

To submit the secret code to the memory card to enable the write operation with the SLE 4442 and SLE 5542 card, the following actions are executed:

1. Search a '1' bit in the presentation error counter and write the bit to '0'.
2. Present the specified code to the card.
3. Try to erase the presentation error counter.

Command Format (*abData* field in the *PC_to_RDR_XfrBlock*)

Pseudo-APDU							
CLA	INS	P1	P2	MEM_L	CODE		
					Byte 1	Byte 2	Byte 3
FFh	20h	00h	00h	03h			

Where:

CODE Three bytes secret code (PIN)

Response Data Format (*abData* field in the *RDR_to_PC_DataBlock*)

SW1	SW2 ErrorCnt
90h	

Where:

SW1 = 90h

SW2 (ErrorCnt) = Error Counter. 07h indicates that the verification is correct. 00h indicates the password is locked (exceeded the maximum number of retries). Other values indicate that the current verification has failed.



9.6.8. CHANGE_CODE_MEMORY_CARD (SLE 4442 and SLE 5542)

This command is used to write the specified data as new secret code in the card.

The current secret code must have been presented to the card with the *PRESENT_CODE* command prior to the execution of this command.

Command Format (*abData* field in the *PC_to_RDR_XfrBlock*)

Pseudo-APDU							
CLA	INS	P1	P2	MEM_L	CODE		
					Byte 1	Byte 2	Byte 3
FFh	D2h	00h	01h	03h			

Response Data Format (*abData* field in the *RDR_to_PC_DataBlock*)

SW1	SW2

Where:

SW1 SW2 = 90 00h if no error

9.7. Memory Card – SLE 4406/SLE 4436/SLE 5536/SLE 6636

9.7.1. SELECT_CARD_TYPE

This command powers down and up the selected card that is inserted in the card reader and performs a card reset.

Note: This command can only be used after the logical smart card reader communication has been established using the *SCardConnect()* API. For details of *SCardConnect()* API, please refer to PC/SC specifications.

Command Format (*abData* field in the *PC_to_RDR_XfrBlock*)

Pseudo-APDU					
CLA	INS	P1	P2	Lc	Card Type
FFh	A4h	00h	00h	01h	07h

Response Data Format (*abData* field in the *RDR_to_PC_DataBlock*)

SW1	SW2

Where:

SW1 SW2 = 90 00h if no error

9.7.2. READ_MEMORY_CARD

Command Format (*abData* field in the *PC_to_RDR_XfrBlock*)

Pseudo-APDU				
CLA	INS	P1	Byte Address	MEM_L
FFh	B0h	00h		

Where:

Byte Address = Memory address location of the memory card

MEM_L Length of data to be read from the memory card

Response Data Format (*abData* field in the *RDR_to_PC_DataBlock*)

BYTE 1	BYTE N	SW1	SW2

Where:

BYTE x Data read from memory card

SW1, SW2 = 90 00h if no error

9.7.3. WRITE_ONE_BYTE_MEMORY_CARD

This command is used to write one byte to the specified address of the inserted card. The byte is written to the card with LSB first, i.e., the bit at card address 0 is regarded as the LSB of byte 0.

Four different WRITE modes are available for this card type, which are distinguished by a flag in the command data field:

a. **Write**

The byte value specified in the command is written to the specified address. This command can be used for writing personalization data and counter values to the card.

b. **Write with carry**

The byte value specified in the command is written to the specified address and the command is sent to the card to erase the next lower counter stage. Thus, this write mode can only be used for updating the counter value in the card.

c. **Write with backup enabled** (SLE 4436, SLE 5536 and SLE 6636 only)

The byte value specified in the command is written to the specified address. This command can be used for writing personalization data and counter values to the card. Backup bit is enabled to prevent data loss when card tearing occurs.

d. **Write with carry and backup enabled** (SLE 4436, SLE 5536 and SLE 6636 only)

The byte value specified in the command is written to the specified address and the command is sent to the card to erase the next lower counter stage. Thus, this write mode can only be used for updating the counter value in the card. Backup bit is enabled to prevent data loss when card tearing occurs.

With all write modes, the byte at the specified card address is not erased prior to the write operation and, hence, memory bits can only be programmed from '1' to '0'.

The backup mode available in the SLE 4436 and SLE 5536 card can be enabled or disabled in the write operation.



Command Format (*abData* field in the *PC_to_RDR_XfrBlock*)

Pseudo-APDU						
CLA	INS	P1	Byte Address	MEM_L	MODE	BYTE
FFh	D0h	00h		02h		

Where:

Byte Address	= Memory address location of the memory card
MODE	Specifies the write mode and backup option
	00h: Write
	01h: Write with carry
	02h: Write with backup enabled (SLE 4436, SLE 5536 and SLE 6636 only)
	03h: Write with carry and with backup enabled (SLE 4436, SLE 5536 and SLE 6636 only)
BYTE	Byte value to be written to the card

Response Data Format (*abData* field in the *RDR_to_PC_DataBlock*)

SW1	SW2

Where:

SW1 SW2	= 90 00h if no error
----------------	----------------------

9.7.4. PRESENT_CODE_MEMORY_CARD

To submit the secret code to the memory card to enable the card personalization mode, the following actions are executed:

1. Search a '1' bit in the presentation counter and write the bit to '0'.
2. Present the specified code to the card.

The ACR3901U-S1 does not try to erase the presentation counter after the code submission. This must be done by the application software through a separate 'Write with carry' command.

Command Format (*abData* field in the *PC_to_RDR_XfrBlock*)

Pseudo-APDU								
CLA	INS	P1	P2	MEM_L	CODE			
					ADDR	Byte 1	Byte 2	Byte 3
FFh	20h	00h	00h	04h	09h			

Where:

ADDR	Byte address of the presentation counter in the card
CODE	Three bytes secret code (PIN)



Response Data Format (*abData* field in the *RDR_to_PC_DataBlock*)

SW1	SW2

Where:

SW1 SW2 = 90 00h if no error

9.7.5. AUTHENTICATE_MEMORY_CARD (SLE 4436, SLE 5536 and SLE 6636)

To read a card authentication certificate from a SLE 5536 or SLE 6636 card, the ACR3901U-S1 executes the following actions:

1. Select Key 1 or Key 2 in the card as specified in the command.
2. Present the challenge data specified in the command to the card.
3. Generate the specified number of CLK pulses for each bit of authentication data computed by the card.
4. Read 16 bits of authentication data from the card.
5. Reset the card to normal operation mode.

The authentication has to be performed in two steps. The first step is to send the Authentication Certificate to the card. The second step is to get back two bytes of authentication data calculated by the card.

Step 1: Send Authentication Certificate to the Card.

Command Format (*abData* field in the *PC_to_RDR_XfrBlock*)

Pseudo-APDU											
CLA	INS	P1	P2	MEM_L	CODE						
					KEY	CLK_CNT	Byte 1	Byte 2	Byte 5	Byte 6
FFh	84h	00h	00h	08h							

Where:

KEY	Key to be used for the computation of the authentication certificate: 00h: Key 1 with no cipher block chaining 01h: Key 2 with no cipher block chaining 80h: Key 1 with cipher block chaining (SLE 5536 and SLE 6636 only) 81h: Key 2 with cipher block chaining (SLE 5536 and SLE 6636 only)
CLK_CNT	Number of CLK pulses to be supplied to the card for the computation of each bit of the authentication certificate. Typical value is 160 clocks (A0h)
BYTE 1...6	Card challenge data



Response Data Format (*abData* field in the *RDR_to_PC_DataBlock*)

SW1	SW2
61h	02h

Where:

SW1 SW2 = 61 02h if no error, meaning two bytes of authentication data are ready. The authentication data can be retrieved by *Get_Response* command

Step 2: Get back the Authentication Data (*Get_Response*).

Command Format (*abData* field in the *PC_to_RDR_XfrBlock*)

Pseudo-APDU				
CLA	INS	P1	P2	MEM_L
FFh	C0h	00h	00h	02h

Response Data Format (*abData* field in the *RDR_to_PC_DataBlock*)

CERT	SW1	SW2

Where:

CERT 16 bits of authentication data computed by the card. The LSB of BYTE 1 is the first authentication bit read from the card.

SW1 SW2 = 90 00h if no error

9.8. Memory Card – SLE 4404

9.8.1. SELECT_CARD_TYPE

This command powers up and down the selected card that is inserted in the card reader and performs a card reset.

Note: This command can only be used after the logical smart card reader communication has been established using the *SCardConnect()* API. For details of *SCardConnect()* API, please refer to PC/SC specifications.

Command Format (*abData* field in the *PC_to_RDR_XfrBlock*)

Pseudo-APDU					
CLA	INS	P1	P2	Lc	Card Type
FFh	A4h	00h	00h	01	08h

Response Data Format (*abData* field in the *RDR_to_PC_DataBlock*)

SW1	SW2

Where:

SW1 SW2 = 90 00h if no error

9.8.2. READ_MEMORY_CARD

Command Format (*abData* field in the *PC_to_RDR_XfrBlock*)

Pseudo-APDU				
CLA	INS	P1	Byte Address	MEM_L
FFh	B0h	00h		

Where:

Byte Address = Memory address location of the memory card

MEM_L Length of data to be read from the memory card

Response Data Format (*abData* field in the *RDR_to_PC_DataBlock*)

BYTE 1	BYTE N	SW1	SW2

Where:

BYTE x Data read from memory card

SW1 SW2 = 90 00h if no error

9.8.3. WRITE_MEMORY_CARD

This command is used to write data to the specified address of the inserted card. The byte is written to the card with LSB first, i.e., the bit at card address 0 is regarded as the LSB of byte 0.

The byte at the specified card address is not erased prior to the write operation and, hence, memory bits can only be programmed from '1' to '0'.

Command Format (*abData* field in the *PC_to_RDR_XfrBlock*)

Pseudo-APDU								
CLA	INS	P1	Byte Address	MEM_L	Byte 1	Byte N
FFh	D0h	00h						

Where:

Byte Address = Memory address location of the memory card

MEM_L Length of data to be written to the memory card

BYTE Byte value to be written to the card



Response Data Format (*abData* field in the *RDR_to_PC_DataBlock*)

SW1	SW2

Where:

SW1 SW2 = 90 00h if no error

9.8.4. ERASE_SCRATCH_PAD_MEMORY_CARD

This command is used to erase the data of the scratch pad memory of the inserted card. All memory bits inside the scratch pad memory will be programmed to the state of '1'.

To erase error counter or user area, please use the *VERIFY_USER_CODE* command as specified in the **VERIFY_USER_CODE**.

Command Format (*abData* field in the *PC_to_RDR_XfrBlock*)

Pseudo-APDU				
CLA	INS	P1	Byte Address	MEM_L
FFh	D2h	00h		00h

Where:

Byte Address = Memory byte address location of the scratch pad
Typical value is 02h

Response Data Format (*abData* field in the *RDR_to_PC_DataBlock*)

SW1	SW2

Where:

SW1 SW2 = 90 00h if no error

9.8.5. VERIFY_USER_CODE

This command is used to submit User Code (2 bytes) to the inserted card. User Code is used to enable the memory access of the card.

The following actions are executed:

1. Present the specified code to the card.
2. Search a '1' bit in the presentation error counter and write the bit to '0'.
3. Erase the presentation error counter. The User Error Counter can be erased when the submitted code is correct.



Command Format (*abData* field in the *PC_to_RDR_XfrBlock*)

Pseudo-APDU						
CLA	INS	Error Counter LEN	Byte Address	MEM_L	CODE	
					Byte 1	Byte 2
FFh	20h	04h	08h	02h		

Where:

Error Counter LEN Length of presentation error counter in bits
Byte Address Byte address of the key in the card
CODE 2 bytes User Code

Response Data Format (*abData* field in the *RDR_to_PC_DataBlock*)

SW1	SW2

Where:

SW1 SW2 = 90 00h if no error
 = 63 00h if there are no more retries

Note: After SW1SW2 = 9000h has been received, read back the User Error Counter to check if the *VERIFY_USER_CODE* is correct. If User Error Counter is erased and is equal to "FFh," the previous verification is successful.

9.8.6. VERIFY_MEMORY_CODE

This command is used to submit Memory Code (4 bytes) to the inserted card. Memory Code is used to authorize the reloading of the user memory, together with the User Code.

The following actions are executed:

1. Present the specified code to the card.
2. Search a '1' bit in the presentation error counter and write the bit to '0'.
3. Erase the presentation error counter. Please note that Memory Error Counter cannot be erased.

Command Format (*abData* field in the *PC_to_RDR_XfrBlock*)

Pseudo-APDU								
CLA	INS	Error Counter LEN	Byte Address	MEM_L	CODE			
					Byte 1	Byte 2	Byte 3	Byte 4
FFh	20h	40h	28h	04h				



Response Data Format (*abData* field in the *RDR_to_PC_DataBlock*)

SW1	SW2

Where:

SW1 SW2 = 90 00h if no error
= 63 00h if there are no more retries

Note: After *SW1SW2* = 9000h has been received, read back the Application Area can check if the *VERIFY_MEMORY_CODE* is correct. If all data in Application Area is erased and is equal to "FFh," the previous verification is successful.

9.9. Memory Card – AT88SC101/AT88SC102/AT88SC1003

9.9.1. SELECT_CARD_TYPE

This command powers down and up the selected card that is inserted in the card reader and performs a card reset.

Note: This command can only be used after the logical smart card reader communication has been established using the *SCardConnect()* API. For details of *SCardConnect()* API, please refer to PC/SC specifications.

Command Format (*abData* field in the *PC_to_RDR_XfrBlock*)

Pseudo-APDU					
CLA	INS	P1	P2	Lc	Card Type
FFh	A4h	00h	00h	01h	09h

Response Data Format (*abData* field in the *RDR_to_PC_DataBlock*)

SW1	SW2

Where:

SW1 SW2 = 90 00h if no error

9.9.2. READ_MEMORY_CARD

Command Format (*abData* field in the *PC_to_RDR_XfrBlock*)

Pseudo-APDU				
CLA	INS	P1	Byte Address	MEM_L
FFh	B0h	00h		

Where:

Byte Address = Memory address location of the memory card

MEM_L Length of data to be read from the memory card



Response Data Format (*abData* field in the *RDR_to_PC_DataBlock*)

BYTE 1	BYTE N	SW1	SW2

Where:

BYTE x Data read from memory card

SW1 SW2 = 90 00h if no error

9.9.3. WRITE_MEMORY_CARD

This command is used to write data to the specified address of the inserted card. The byte is written to the card with LSB first, i.e., the bit at card address 0 is regarded as the LSB of byte 0.

The byte at the specified card address is not erased prior to the write operation and, hence, memory bits can only be programmed from '1' to '0'.

Command Format (*abData* field in the *PC_to_RDR_XfrBlock*)

Pseudo-APDU								
CLA	INS	P1	Byte Address	MEM_L	Byte 1	Byte N
FFh	D0h	00h						

Where:

Byte Address Memory address location of the memory card

MEM_L Length of data to be written to the memory card

BYTE Byte value to be written to the card

Response Data Format (*abData* field in the *RDR_to_PC_DataBlock*)

SW1	SW2

Where:

SW1 SW2 = 90 00h if no error

9.9.4. ERASE_NON_APPLICATION_ZONE

This command is used to erase the data in Non-Application Zones. The EEPROM memory is organized into 16-bit words. Although erases are performed on single bit, the ERASE operation clears an entire word in the memory. Therefore, performing an ERASE on any bit in the word will clear ALL 16 bits of that word to the state of '1'.

To erase Error Counter or the data in Application Zones, please refer to the following:

1. *ERASE_APPLICATION_ZONE_WITH_ERASE* command as specified in:

ERASE_APPLICATION_ZONE_WITH_ERASE

2. *ERASE_APPLICATION_ZONE_WITH_WRITE_AND_ERASE* command as specified in:

ERASE_APPLICATION_ZONE_WITH_WRITE_AND_ERASE



3. *VERIFY_SECURITY_CODE* commands as specified in:

VERIFY_SECURITY_CODE

Command Format (*abData* field in the *PC_to_RDR_XfrBlock*)

Pseudo-APDU				
CLA	INS	P1	Byte Address	MEM_L
FFh	D2h	00h		00h

Where:

Byte Address Memory byte address location of the word to be erased

Response Data Format (*abData* field in the *RDR_to_PC_DataBlock*)

SW1	SW2

Where:

SW1 SW2 = 90 00h if no error

9.9.5. ERASE_APPLICATION_ZONE_WITH_ERASE

This command can be used in the following cases:

1. AT88SC101: To erase the data in Application Zone with EC Function Disabled.
2. AT88SC102: To erase the data in Application Zone 1.
3. AT88SC102: To erase the data in Application Zone 2 with EC2 Function Disabled.
4. AT88SC1003: To erase the data in Application Zone 1.
5. AT88SC1003: To erase the data in Application Zone 2 with EC2 Function Disabled.
6. AT88SC1003: To erase the data in Application Zone 3.

The following actions are executed for this command:

1. Present the specified code to the card.
 - a. Erase the presentation error counter. The data in corresponding Application Zone can be erased when the submitted code is correct.

Command Format (*abData* field in the *PC_to_RDR_XfrBlock*)

Pseudo-APDU									
CLA	INS	Error Counter LEN	Byte Address	MEM_L	CODE				
					Byte 1	Byte 2	Byte N
FFh	20h	00h							

Where:

Error Counter LEN Length of presentation error counter in bits. The value should be 00h always.



Byte Address

Byte address of the Application Zone Key in the card. Please refer to the table below for the correct value.

	Byte Address	LEN
AT88SC101: Erase Application Zone with EC function disabled	96h	04h
AT88SC102: Erase Application Zone 1	56h	06h
AT88SC102: Erase Application Zone 2 with EC2 function disabled	9Ch	04h
AT88SC1003: Erase Application Zone 1	36h	06h
AT88SC1003: Erase Application Zone 2 with EC2 function disabled	5Ch	04h
AT88SC1003: Erase Application Zone 3	C0h	06h

MEM_L

Length of the Erase Key. Please refer to the table above for the correct value.

CODE

N bytes of Erase Key

Response Data Format (*abData* field in the *RDR_to_PC_DataBlock*)

SW1	SW2

Where:

SW1 SW2 = 90 00h if no error

Note: After SW1SW2 = 9000h has been received, read back the data in Application Zone to check if the *ERASE_APPLICATION_ZONE_WITH_ERASE* is correct. If all data in Application Zone is erased and is equal to "FFh," the previous verification is successful.

9.9.6. ERASE_APPLICATION_ZONE_WITH_WRITE_AND_ERASE

This command can be used in the following cases:

1. AT88SC101: To erase the data in Application Zone with EC Function Enabled.
2. AT88SC102: To erase the data in Application Zone 2 with EC2 Function Enabled.
3. AT88SC1003: To erase the data in Application Zone 2 with EC2 Function Enabled.

With EC or EC2 Function Enabled (that is, ECEN or EC2EN Fuse is undamaged and in "1" state), the following actions are executed:

1. Present the specified code to the card.
2. Search a '1' bit in the presentation error counter and write the bit to '0'.
3. Erase the presentation error counter. The data in corresponding Application Zone can be erased when the submitted code is correct.

Command Format (*abData* field in the *PC_to_RDR_XfrBlock*)

Pseudo-APDU								
CLA	INS	Error Counter LEN	Byte Address	MEM_L	CODE			
					Byte 1	Byte 2	Byte 3	Byte 4
FFh	20h	80h		04h				

Where:

Error Counter LEN Length of presentation error counter in bits. The value should be 80h always.

Byte Address Byte address of the Application Zone Key in the card

	Byte Address
AT88SC101	96h
AT88SC102	9Ch
AT88SC1003	5Ch

CODE 4 bytes Erase Key

Response Data Format (*abData* field in the *RDR_to_PC_DataBlock*)

SW1	SW2

Where:

SW1 SW2 = 90 00h if no error
= 63 00h if there are no more retries

Note: After SW1SW2 = 9000h has been received, read back the data in Application Zone can check whether the ERASE_APPLICATION_ZONE_WITH_WRITE_AND_ERASE is correct. If all data in Application Zone is erased and is equal to "FFh," the previous verification is successful.

9.9.7. VERIFY_SECURITY_CODE

This command is used to submit Security Code (2 bytes) to the inserted card. Security Code is to enable the memory access of the card.

The following actions are executed:

1. Present the specified code to the card
2. Search a '1' bit in the presentation error counter and write the bit to '0'
3. Erase the presentation error counter. The Security Code Attempts Counter can be erased when the submitted code is correct.

Command Format (*abData* field in the *PC_to_RDR_XfrBlock*)

Pseudo-APDU						
CLA	INS	Error Counter LEN	Byte Address	MEM_L	CODE	
					Byte 1	Byte 2
FFh	20h	08h	0Ah	02h		



Where:

Error Counter LEN	Length of presentation error counter in bits
Byte Address	Byte address of the key in the card
CODE	2 bytes Security Code

Response Data Format (*abData* field in the *RDR_to_PC_DataBlock*)

SW1	SW2

Where:

SW1, SW2	= 90 00h if no error Fe
	= 63 00h if there are no more retries

Note: After SW1SW2 = 9000h has been received, read back the Security Code Attempts Counter (SCAC) to check whether the VERIFY_USER_CODE is correct. If SCAC is erased and is equal to "FFh," the previous verification is successful.

9.9.8. BLOWN_FUSE

This command is used to blow the fuse of the inserted card. The fuse can be EC_EN Fuse, EC2EN Fuse, Issuer Fuse or Manufacturer's Fuse.

Note: The blowing of fuse is an irreversible process.

Command Format (*abData* field in the *PC_to_RDR_XfrBlock*)

Pseudo-APDU								
CLA	INS	Error Counter LEN	Byte Address	MEM_L	CODE			
					Fuse Bit Addr (High)	Fuse Bit Addr (Low)	State of FUS Pin	State of RST Pin
FFh	05h	00h	00h	04h			01h	00h or 01h

Where:

Fuse Bit Addr (2 bytes)	Bit address of the fuse. Please refer to the table below for the correct value.
State of FUS Pin	State of the FUS pin. Should always be 01h.
State of RST Pin	State of the RST pin. Please refer to below table for the correct value.



		Fuse Bit Addr (High)	Fuse Bit Addr (Low)	State of RST Pin
AT88SC101	Manufacturer Fuse	05h	80h	01h
	EC_EN Fuse	05h	C9h	01h
	Issuer Fuse	05h	E0h	01h
AT88SC102	Manufacturer Fuse	05h	B0h	01h
	EC2EN Fuse	05h	F9h	01h
	Issuer Fuse	06h	10h	01h
AT88SC1003	Manufacturer Fuse	03h	F8h	00h
	EC2EN Fuse	03h	FCh	00h
	Issuer Fuse	03h	E0h	00h

Response Data Format (*abData* field in the *RDR_to_PC_DataBlock*)

SW1	SW2

Where:

SW1 SW2 = 90 00h if no error

10.0. Other Commands Access via PC_to_RDR_XfrBlock

10.1. GET_READER_INFORMATION

This command returns relevant information about ACR3901U-S1 and the current operating status, such as, the firmware revision number, the maximum data length of a command and response, the supported card types, and whether a card is inserted and powered up or not.

Note: This command can only be used after the logical smart card reader communication has been established using the `SCardConnect()` API. For details of `SCardConnect()` API, please refer to PC/SC specifications.

Command Format (*abData* field in the *PC_to_RDR_XfrBlock*)

Pseudo-APDU				
CLA	INS	P1	P2	Lc
FFh	09h	00h	00h	10h

Response Data Format (*abData* field in the *RDR_to_PC_DataBlock*)

FIRMWARE										MAX_C	MAX_R	C_TYPE		C_SEL	C_STAT

Where:

- FIRMWARE** 10 bytes data for firmware version
- MAX_C** The maximum number of command data bytes
- MAX_R** The maximum number of data bytes that can be requested to be transmitted in a response
- C_TYPE** The card types supported by the ACR3901U-S1. This data field is a bitmap with each bit representing a particular card type. A bit set to '1' means the corresponding card type is supported by the reader and can be selected with the *SELECT_CARD_TYPE* command. The bit assignment is as follows:

Byte	1										2									
	F	E	D	C	B	A	9	8	7	6	5	4	3	2	1	0				

Refer to the next section for the correspondence between these bits and the respective card types.

- C_SEL** The currently selected card type. A value of 00h means that no card type has been selected.
- C_STAT** Indicates whether a card is physically inserted in the reader and whether the card is powered up:
- 00h: No card inserted
 - 01h: Card inserted, not powered up
 - 03h: Card powered up



Appendix A. Supported Card Types

The following table summarizes the card type returned by *GET_READER_INFORMATION* correspond with the respective card type.

Byte	Card Type
00h	Auto-select T=0 or T=1 communication protocol
01h	I2C memory card (1, 2, 4, 8 and 16 kilobits)
02h	I2C memory card (32, 64, 128, 256, 512 and 1024 kilobits)
03h	Atmel AT88SC153 secure memory card
04h	Atmel AT88SC1608 secure memory card
05h	Infineon SLE 4418 and SLE 4428
06h	Infineon SLE 4432 and SLE 4442
07h	Infineon SLE 4406, SLE 4436 and SLE 5536
08h	Infineon SLE 4404
09h	Atmel AT88SC101, AT88SC102 and AT88SC1003
0Ch	MCU-based cards with T=0 communication protocol
0Dh	MCU-based cards with T=1 communication protocol

Table 12: Supported Card Types



Appendix B. Error Codes

The following table summarizes all the error codes for ACR3901U-S1:

Error Code	Description
01h	Invalid checksum
02h	Invalid data length
03h	Invalid command format
04h	Invalid command/Unknown command ID
05h	Card operation error
06h	Authentication is required/Authentication error
07h	Low battery
08h	Authentication failed

Table 13: Error Code

Android is a trademark of Google LLC.

Atmel is a registered trademark of Atmel Corporation or its subsidiaries, in the US and/or other countries.

The Bluetooth® word, mark and logos are registered trademarks owned by Bluetooth SIG, Inc. and any use of such marks by Advanced Card Systems Ltd. is under license. Other trademarks and trade names are those of their respective owners.

Infineon is a registered trademark of Infineon Technologies AG.

Microsoft is a registered trademark of Microsoft Corporation in the United States and/or other countries.